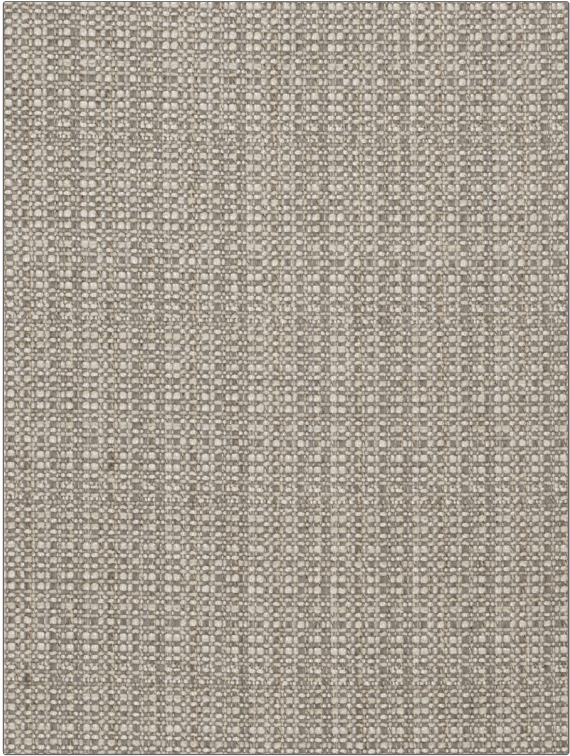


**PATTERN** Cashing Out  
**COLOR** Metal

<b>BRAND</b>	<b>APPLICATION</b>
Fabricut	Fabric
<b>USES</b>	<b>CATEGORIES</b>
Upholstery	Wovens
<b>COLORS</b>	<b>DESIGN TYPES</b>
Grey	Small Scale Woven, Texture Plain
<b>SCALE</b>	<b>RAILROADED</b>
Small	Not Railroaded



<b>WIDTH</b>	<b>VERTICAL REPEAT</b>	<b>HORIZONTAL REPEAT</b>	<b>CONTENT</b>
55.00 in (139.70 cm)	0.00 in (0.00 cm)	0.00 in (0.00 cm)	49% Polyester, 24% Cotton, 23% Acrylic, 4% Rayon
<b>BACKING</b>	<b>FIRE CODES</b>	<b>DOUBLE RUBS</b>	<b>PRODUCT NUMBER</b>
Light Acrylic Backing	UFAC Class I / NFPA 260	Exceeds 50,000 Double Rubs (Wyzenbeek Method)	6456007
<b>COUNTRY</b>	<b>CLEANING CODES</b>		
China	S		

**ADDITIONAL PRODUCT NOTES**

Ca Tb 117-2013, Light Acrylic Backing