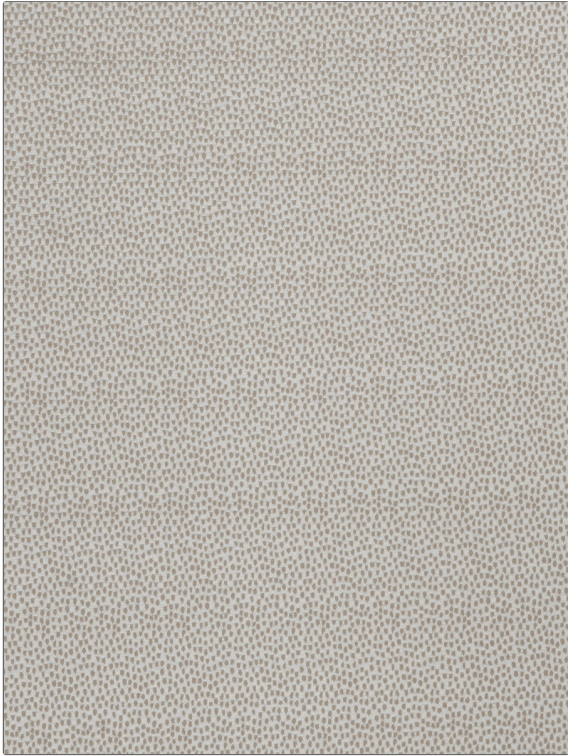


PATTERN **McDibbs**
COLOR **Barley**

| | |
|---------------------------------------|--|
| BRAND | APPLICATION |
| Fabricut | Fabric |
| USES | CATEGORIES |
| Bedding, Drapery, Multipurpose | Faux Silk |
| COLORS | DESIGN TYPES |
| Linen | Contemporary / Modern, Animal Skins, Dots / Circles |
| SCALE | RAILROADED |
| Small | Not Railroaded |



| | | | |
|-----------------------------|--------------------------------|--|----------------------------------|
| WIDTH | VERTICAL REPEAT | HORIZONTAL REPEAT | CONTENT |
| 54.00 in (137.16 cm) | 0.00 in (0.00 cm) | 0.00 in (0.00 cm) | 76% Cotton, 24% Polyester |
| BACKING | FIRE CODES | DOUBLE RUBS | PRODUCT NUMBER |
| | UFAC Class I / NFPA 260 | Exceeds 36,000 Double Rubs (Wyzenbeek Method) | 6444803 |
| COUNTRY | CLEANING CODES | | |
| India | S | | |

ADDITIONAL PRODUCT NOTES

Ca Tb 117-2013, Exclusive Pattern