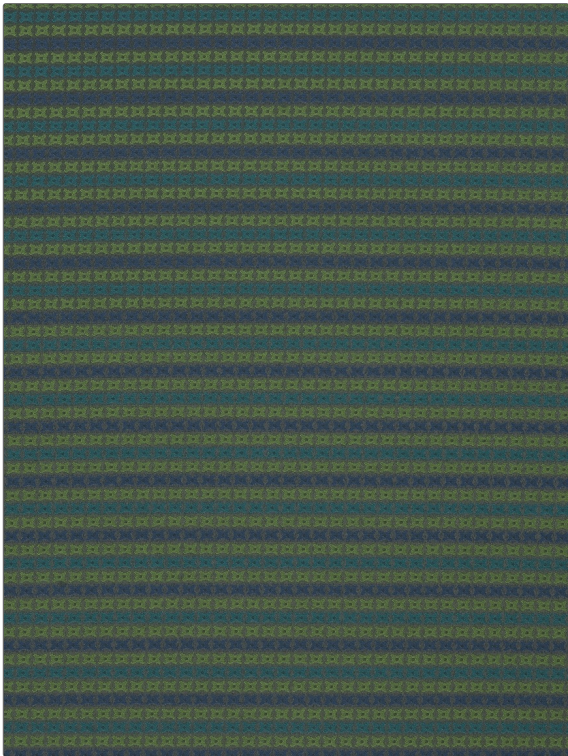


PATTERN Alethea
COLOR 05

| | |
|--------------------------------|--|
| BRAND | APPLICATION |
| Fabricut | Fabric |
| USES | CATEGORIES |
| Upholstery | Wovens, Crypton |
| COLORS | DESIGN TYPES |
| Blue, Aqua / Teal, Light Green | Check / Plaid, Contemporary / Modern, Dots / Circles |
| SCALE | RAILROADED |
| Small | Not Railroaded |



| | | | |
|-----------------------|------------------|-------------------------|---|
| WIDTH | FINISH | VERTICAL REPEAT | HORIZONTAL REPEAT |
| 55.00 in (139.70 cm) | Crypton | 1.25 in (3.18 cm) | 0.40 in (1.02 cm) |
| CONTENT | BACKING | FIRE CODES | DOUBLE RUBS |
| 100% Polyester | Crypton® Backing | UFAC Class I / NFPA 260 | Exceeds 51,000 Double Rubs (Wyzenbeek Method) |
| PRODUCT NUMBER | COUNTRY | CLEANING CODES | |
| 6365105 | USA | W | |

ADDITIONAL PRODUCT NOTES

Crypton, Crypton® Backing, Exclusive Pattern