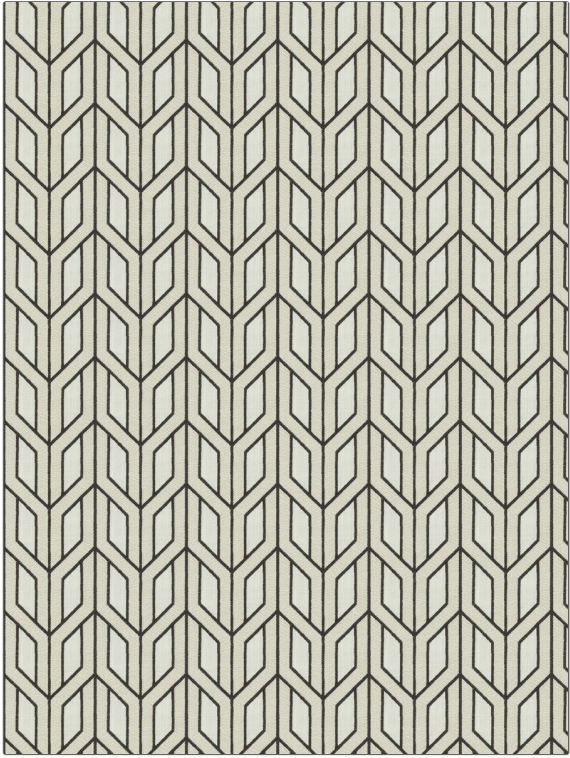


Fabric Product Details

PATTERN Lodoota
COLOR Mocha

| | |
|------------------|--|
| BRAND | APPLICATION |
| Fabricut | Fabric |
| USES | CATEGORIES |
| Bedding, Drapery | Crewels / Embroideries |
| COLORS | DESIGN TYPES |
| Brown, Beige | Lattice / Fretwork, Contemporary / Modern |
| SCALE | RAILROADED |
| Medium | Not Railroaded |



| | | | |
|----------------------|------------------------|--------------------------|--|
| WIDTH | VERTICAL REPEAT | HORIZONTAL REPEAT | CONTENT |
| 52.00 in (132.08 cm) | 3.12 in (7.92 cm) | 4.37 in (11.10 cm) | Embroidery: 100% Cotton, Base: 52% Polyester, 48% Cotton |
| BACKING | PRODUCT NUMBER | COUNTRY | CLEANING CODES |
| | 6245001 | India | S |

ADDITIONAL PRODUCT NOTES

Embroidered Textiles Are Not, Guaranteed For Precise Color, Matching And Colorfastness., Color Placement Of Embroidery, May Vary. All Measurements, Quoted For Repeats Are, Approximate.