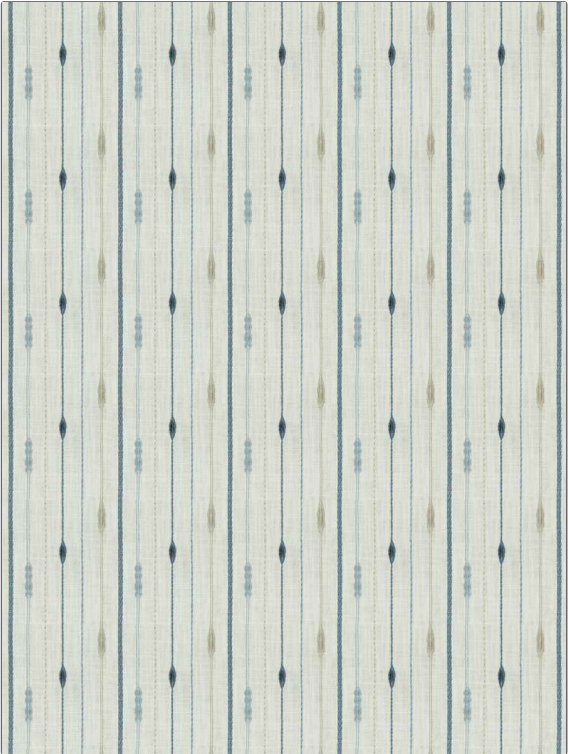


PATTERN	Kraten Stripe
COLOR	Bluejay

BRAND	APPLICATION
Fabricut	Fabric
USES	CATEGORIES
Bedding, Drapery	Crewels / Embroideries
COLORS	DESIGN TYPES
Blue	Embroidery, Novelty, Contemporary / Modern
SCALE	RAILROADED
Medium	Not Railroaded



WIDTH	VERTICAL REPEAT	HORIZONTAL REPEAT	CONTENT
52.00 in (132.08 cm)	6.25 in (15.88 cm)	5.25 in (13.34 cm)	Embroidery: 100% Polyester, Base: 100% Polyester
BACKING	PRODUCT NUMBER	COUNTRY	CLEANING CODES
	6220701	India	S

ADDITIONAL PRODUCT NOTES
Embroidered Textiles Are Not, Guaranteed For Precise Color, Matching And Colorfastness., Color Placement Of Embroidery, May Vary. All Measurements, Quoted For Repeats Are, Approximate.