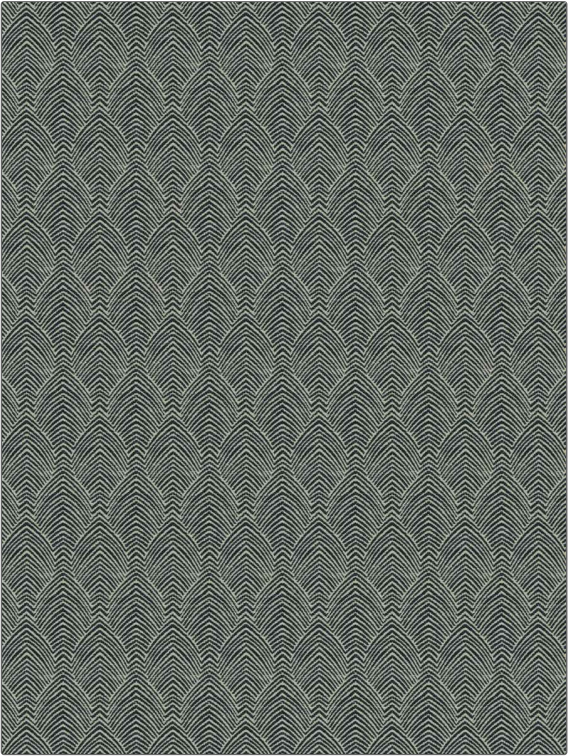


PATTERN	Due Herringbone
COLOR	Indigo

BRAND	APPLICATION
Fabricut	Fabric
USES	CATEGORIES
Bedding, Drapery, Multipurpose, Upholstery	Wovens, Chenille
COLORS	DESIGN TYPES
Blue, Navy	Herringbone, Contemporary / Modern
SCALE	RAILROADED
Medium	Not Railroaded



WIDTH	VERTICAL REPEAT	HORIZONTAL REPEAT	CONTENT
55.00 in (139.70 cm)	4.25 in (10.80 cm)	3.50 in (8.89 cm)	50% Acrylic, 26% Cotton, 24% Polyester
BACKING	FIRE CODES	PRODUCT NUMBER	COUNTRY
	UFAC Class I / NFPA 260	6214201	China
CLEANING CODES			
S			

ADDITIONAL PRODUCT NOTES
Ca Tb 117-2013, Exclusive Pattern