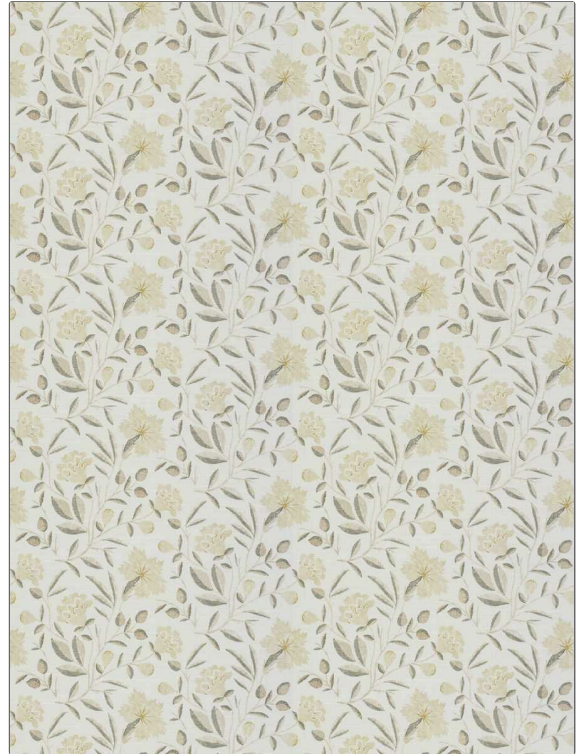


**PATTERN** Lilou  
**COLOR** 05

<b>BRAND</b>	<b>APPLICATION</b>
Fabricut	Fabric
<b>USES</b>	<b>CATEGORIES</b>
Bedding, Drapery, Multipurpose, Upholstery	Prints, Linen
<b>COLORS</b>	<b>DESIGN TYPES</b>
Beige, Gold, Yellow	Floral, Print Pattern
<b>SCALE</b>	<b>RAILROADED</b>
Medium	Not Railroaded



<b>WIDTH</b>	<b>VERTICAL REPEAT</b>	<b>HORIZONTAL REPEAT</b>	<b>CONTENT</b>
54.00 in (137.16 cm)	6.75 in (17.14 cm)	13.50 in (34.29 cm)	44% Cotton, 31% Linen, 25% Rayon
<b>BACKING</b>	<b>FIRE CODES</b>	<b>DOUBLE RUBS</b>	<b>PRODUCT NUMBER</b>
	UFAC Class I / NFPA 260	Exceeds 36,000 Double Rubs (Wyzenbeek Method)	6070105
<b>COUNTRY</b>	<b>CLEANING CODES</b>		
China	S		

**ADDITIONAL PRODUCT NOTES**

Ca Tb 117-2013, Exclusive Pattern