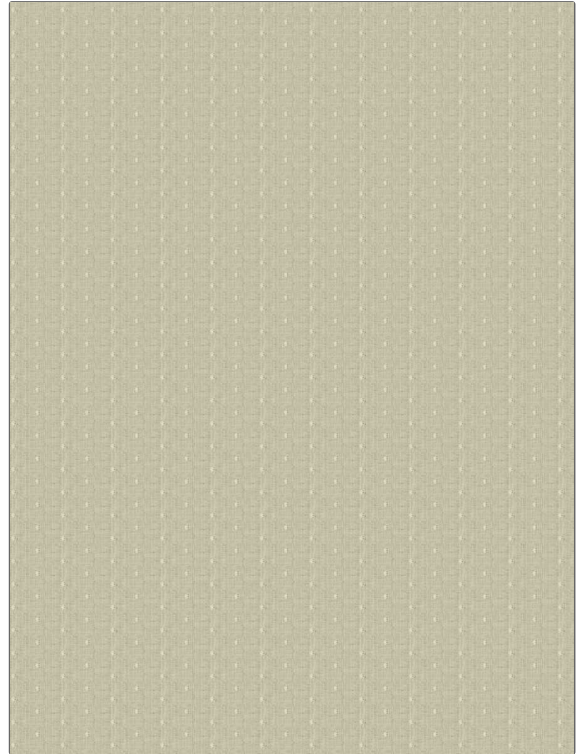


PATTERN Ogo Dot
COLOR 01

BRAND	APPLICATION
Fabricut	Fabric
USES	CATEGORIES
Bedding, Drapery	Crewels / Embroideries
COLORS	DESIGN TYPES
Linen	Embroidery, Dots / Circles
SCALE	RAILROADED
Small	Not Railroaded



WIDTH	VERTICAL REPEAT	HORIZONTAL REPEAT	CONTENT
54.00 in (137.16 cm)	1.00 in (2.54 cm)	2.38 in (6.05 cm)	Embroidery: 78% Cotton, 22% Viscose, Base: 82% Polyester, 11% Cotton, 7% Linen
BACKING	PRODUCT NUMBER	COUNTRY	CLEANING CODES
	6051901	India	S

ADDITIONAL PRODUCT NOTES

Embroidered Textiles Are Not, Guaranteed For Precise Color, Matching And Colorfastness., Color Placement Of Embroidery, May Vary. All Measurements, Quoted For Repeats Are, Approximate.