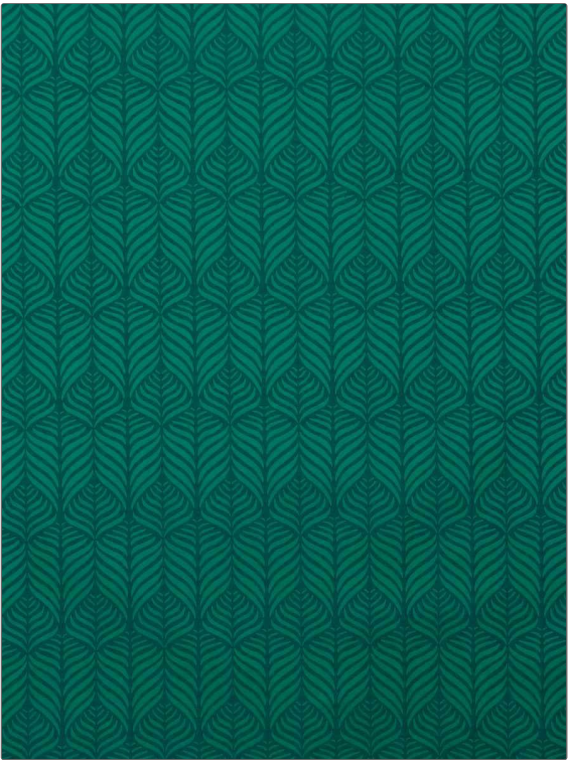


PATTERN	Quill Weave
COLOR	Jade

BRAND	APPLICATION
Liberty of London	Fabric
USES	CATEGORIES
Bedding, Drapery, Multipurpose, Upholstery	Wovens
BOOK	COLORS
LOL Modern Coll Art Nouveau & tree Of Life	Green, Aqua / Teal
DESIGN TYPES	SCALE
Leaves, Ogee	Medium
RAILROADED	
Not Railroaded	



WIDTH	VERTICAL REPEAT	HORIZONTAL REPEAT	CONTENT
57.00 in (144.78 cm)	5.60 in (14.22 cm)	3.50 in (8.89 cm)	46% Linen, 35% Polyester, 19% Cotton
BACKING	FIRE CODES	DOUBLE RUBS	PRODUCT NUMBER
	UFAC Class I / NFPA 260	Exceeds 30,000 Double Rubs (Wyzenbeek Method)	5975901
DATE BOOKED	COUNTRY	CLEANING CODES	
05/2021	Italy	S	

ADDITIONAL PRODUCT NOTES
Passes 20,000 Martindale Tst, Ca Tb 117-2013, Exclusive Pattern