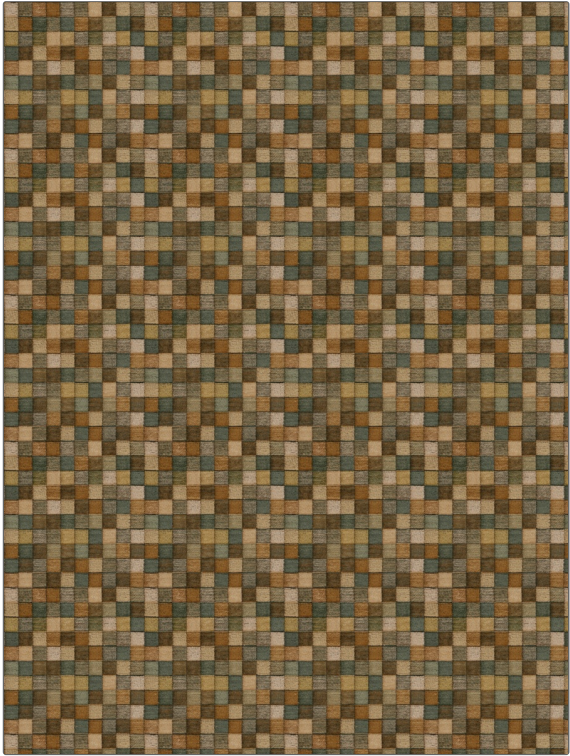


**PATTERN** Grandy  
**COLOR** 01

<b>BRAND</b>	<b>APPLICATION</b>
Fabricut	Fabric
<b>USES</b>	<b>CATEGORIES</b>
Upholstery	Matelasse, Wovens, Solids / Small Scale Patterns, Chenille, Faux Leather / Vinyl
<b>COLORS</b>	<b>DESIGN TYPES</b>
Blue, Taupe / Tan, Gold, Aqua / Teal	Geometric, Jacquard Pattern, Solid, Check / Plaid, Texture Plain, Contemporary / Modern, Abstract
<b>SCALE</b>	<b>RAILROADED</b>
Small	Not Railroaded



<b>WIDTH</b>	<b>FINISH</b>	<b>VERTICAL REPEAT</b>	<b>HORIZONTAL REPEAT</b>
55.00 in (139.70 cm)	Soil & Stain Repellent Finish	6.70 in (17.02 cm)	6.70 in (17.02 cm)
<b>CONTENT</b>	<b>BACKING</b>	<b>FIRE CODES</b>	<b>DOUBLE RUBS</b>
100% Polyester		UFAC Class I / NFPA 260	Exceeds 63,000 Double Rubs (Wyzenbeek Method)
<b>PRODUCT NUMBER</b>	<b>COUNTRY</b>	<b>CLEANING CODES</b>	
5782101	China	S	

**ADDITIONAL PRODUCT NOTES**  
Soil & Stain Repellent Finish, Ca Tb 117-2013