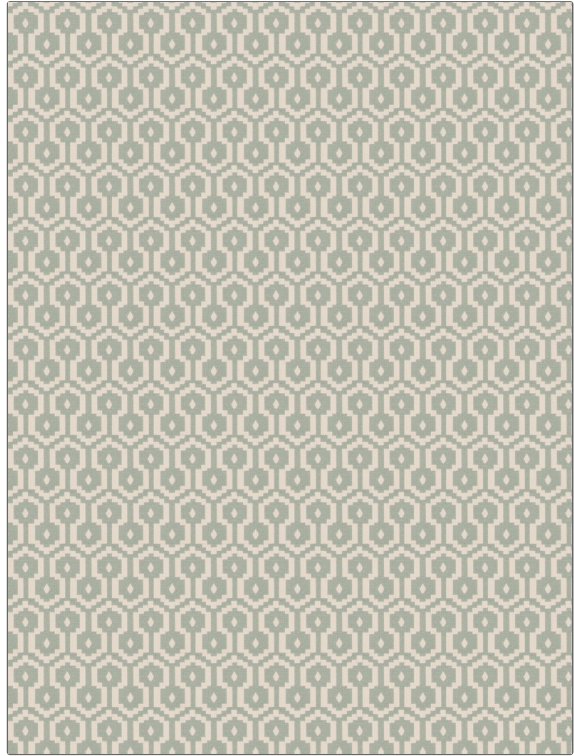


**PATTERN** Pepi  
**COLOR** 02

<b>BRAND</b>	<b>APPLICATION</b>
Fabricut	Fabric
<b>USES</b>	<b>CATEGORIES</b>
Bedding, Drapery, Multipurpose	Wovens
<b>COLORS</b>	<b>DESIGN TYPES</b>
Light Blue, Aqua / Teal	Geometric, Small Scale Woven, Contemporary / Modern
<b>SCALE</b>	<b>RAILROADED</b>
Small	Not Railroaded



<b>WIDTH</b>	<b>VERTICAL REPEAT</b>	<b>HORIZONTAL REPEAT</b>	<b>CONTENT</b>
55.00 in (139.70 cm)	2.50 in (6.35 cm)	2.00 in (5.08 cm)	100% Cotton
<b>BACKING</b>	<b>DOUBLE RUBS</b>	<b>PRODUCT NUMBER</b>	<b>COUNTRY</b>
	Exceeds 51,000 Double Rubs (Wyzenbeek Method)	5100602	China
<b>CLEANING CODES</b>			
S			