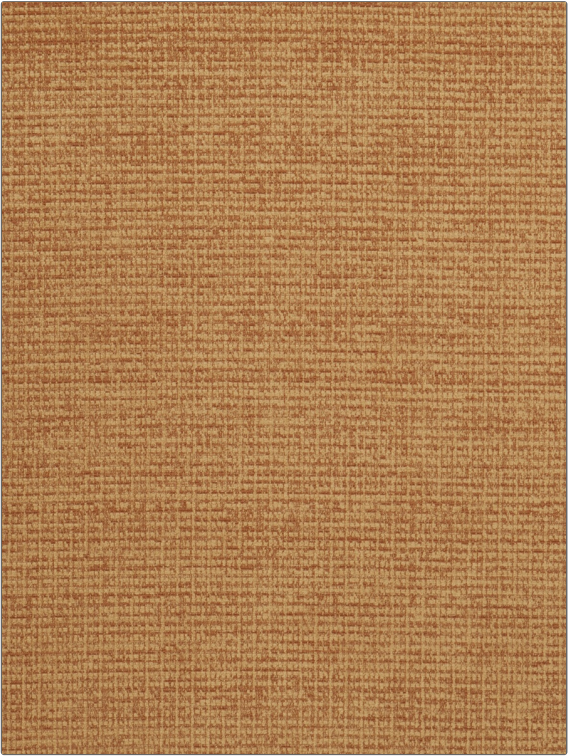


PATTERN	Remington
COLOR	Honey

BRAND	APPLICATION
Fabricut	Fabric
USES	CATEGORIES
Upholstery	Wovens, Chenille
COLORS	DESIGN TYPES
Brown	Texture Plain
RAILOADED	
Not Railroaded	



WIDTH	VERTICAL REPEAT	HORIZONTAL REPEAT	CONTENT
54.00 in (137.16 cm)	0.00 in (0.00 cm)	0.00 in (0.00 cm)	55% Polyester, 38% Acrylic, 7% Viscose
BACKING	FIRE CODES	DOUBLE RUBS	PRODUCT NUMBER
	UFAC Class I / NFPA 260	Exceeds 50,000 Double Rubs (Wyzenbeek Method)	4994905
COUNTRY	CLEANING CODES		
Turkey	WS		

ADDITIONAL PRODUCT NOTES
Exclusive Pattern