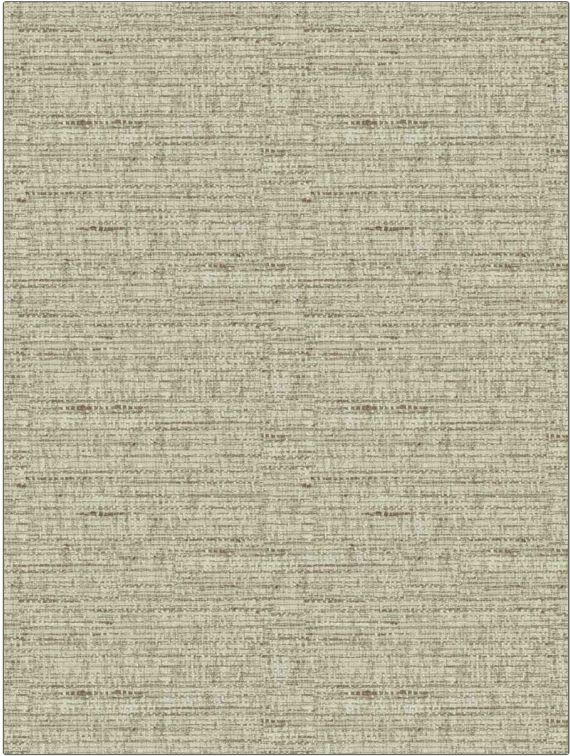


**PATTERN** Homegrown  
**COLOR** Stone

|                         |                    |
|-------------------------|--------------------|
| <b>BRAND</b>            | <b>APPLICATION</b> |
| Fabricut                | Fabric             |
| <b>USES</b>             | <b>CATEGORIES</b>  |
| Upholstery              | Wovens             |
| <b>BOOK</b>             | <b>COLORS</b>      |
| Natural Home Cottonwood | Grey, Taupe / Tan  |
| <b>DESIGN TYPES</b>     | <b>RAILROADED</b>  |
| Texture Plain           | Not Railroaded     |



|                      |                         |   |                       |
|----------------------|-------------------------|---|-----------------------|
| <b>WIDTH</b>         | <b>VERTICAL REPEAT</b>  | <b>HORIZONTAL REPEAT</b>                      | <b>CONTENT</b>        |
| 55.00 in (139.70 cm) | 0.00 in (0.00 cm)       | 0.00 in (0.00 cm)                             | 100% Polyester        |
| <b>BACKING</b>       | <b>FIRE CODES</b>       | <b>DOUBLE RUBS</b>                            | <b>PRODUCT NUMBER</b> |
|                      | UFAC Class I / NFPA 260 | Exceeds 30,000 Double Rubs (Wyzenbeek Method) | 4858502               |
| <b>DATE BOOKED</b>   | <b>COUNTRY</b>          | <b>CLEANING CODES</b>                         |                       |
| 09/2021              | India                   | S   |                       |

**ADDITIONAL PRODUCT NOTES**

Ca Tb 117-2013, Exclusive Pattern