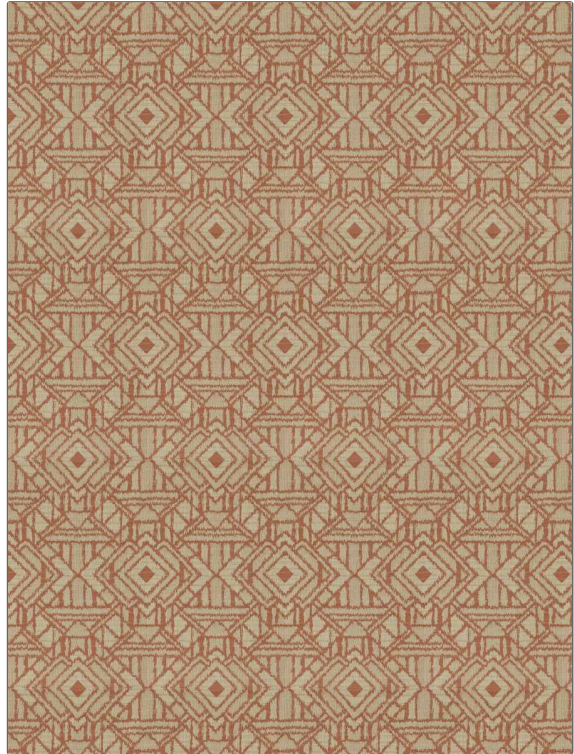


<b>PATTERN</b>	<b>Telluride</b>
<b>COLOR</b>	<b>Terra</b>
<b>BRAND</b>	<b>APPLICATION</b>
<b>Fabricut</b>	<b>Fabric</b>
<b>USES</b>	<b>CATEGORIES</b>
<b>Upholstery</b>	<b>Wovens, Chenille</b>
<b>BOOK</b>	<b>COLORS</b>
<b>Natural Home Terra Spice</b>	<b>Coral / Peach</b>
<b>DESIGN TYPES</b>	<b>SCALE</b>
<b>Global / Ethnic, Jacquard Pattern, Ogee, Diamond</b>	<b>Medium</b>
<b>RAILROADED</b>	
<b>Not Railroaded</b>	



<b>WIDTH</b>	<b>VERTICAL REPEAT</b>	<b>HORIZONTAL REPEAT</b>	<b>CONTENT</b>
<b>54.00 in (137.16 cm)</b>	<b>23.00 in (58.42 cm)</b>	<b>13.25 in (33.66 cm)</b>	<b>60% Viscose, 20% Linen, 10% Cotton, 10% Polyester</b>
<b>BACKING</b>	<b>FIRE CODES</b>	<b>DOUBLE RUBS</b>	<b>PRODUCT NUMBER</b>
	<b>UFAC Class I / NFPA 260</b>	<b>Exceeds 15,000 Double Rubs (Wyzenbeek Method)</b>	<b>4760001</b>
<b>DATE BOOKED</b>	<b>COUNTRY</b>	<b>CLEANING CODES</b>	
<b>09/2021</b>	<b>India</b>	<b>S</b>	

<b>ADDITIONAL PRODUCT NOTES</b>
<b>Ca Tb 117-2013, Exclusive Pattern</b>