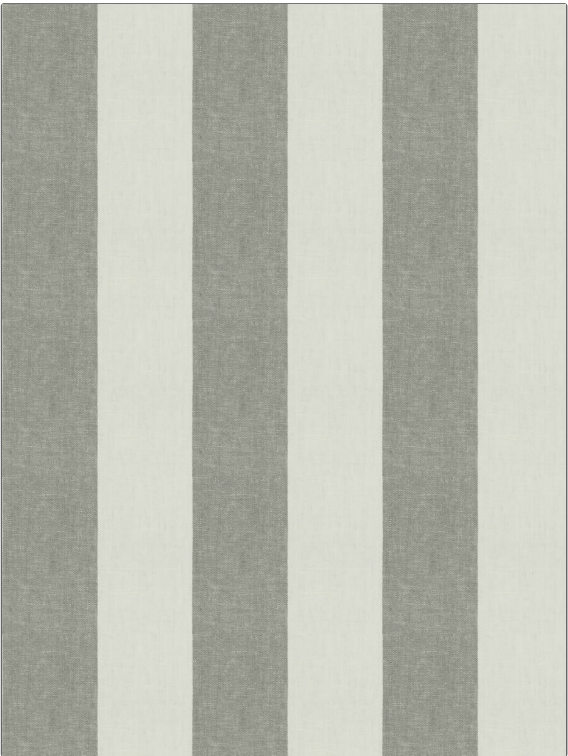


| | |
|---------|-------------------|
| PATTERN | Bentlewood |
| COLOR | Nickel |

| | |
|---|---------------|
| BRAND | APPLICATION |
| Fabricut | Fabric |
| USES | CATEGORIES |
| Bedding, Drapery, Multipurpose, Upholstery | Linen |
| BOOK | COLORS |
| Natural Tailored Cottage | Grey |
| DESIGN TYPES | SCALE |
| Stripes | Large |
| RAILOADED | |
| Not Railroaded | |



| | | | |
|-----------------------------|--------------------------|--|------------------------------|
| WIDTH | VERTICAL REPEAT | HORIZONTAL REPEAT | CONTENT |
| 54.00 in (137.16 cm) | 0.00 in (0.00 cm) | 9.12 in (23.16 cm) | 55% Linen, 45% Cotton |
| BACKING | FIRE CODES | DOUBLE RUBS | PRODUCT NUMBER |
| | UFAC Class I | Exceeds 30,000 Double Rubs (Wyzenbeek Method) | 0470003 |
| DATE BOOKED | COUNTRY | CLEANING CODES | |
| 06/2019 | China | S | |

| |
|------------------------------------|
| ADDITIONAL PRODUCT NOTES |
| Ca Tb 117-2013, Sand Washed |