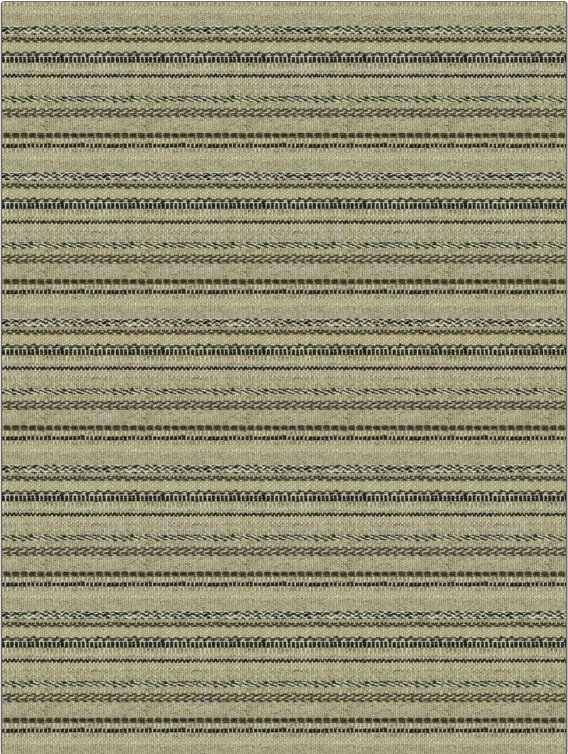


PATTERN	Colima Stripe
COLOR	02

BRAND	APPLICATION
Fabricut	Fabric
USES	CATEGORIES
Upholstery	Wovens
COLORS	DESIGN TYPES
Black, Beige	Global / Ethnic, Stripes
SCALE	RAILOADED
Medium	Not Railroaded



WIDTH	VERTICAL REPEAT	HORIZONTAL REPEAT	CONTENT
56.00 in (142.24 cm)	7.00 in (17.78 cm)	0.00 in (0.00 cm)	29% Viscose, 23% Acrylic, 19% Linen, 17% Polyester, 12% Cotton
BACKING	FIRE CODES	DOUBLE RUBS	PRODUCT NUMBER
	UFAC Class I / NFPA 260	Exceeds 36,000 Double Rubs (Wyzenbeek Method)	4634702
COUNTRY	CLEANING CODES		
Turkey	S		

ADDITIONAL PRODUCT NOTES
Passes 60,000 Martindale Tst, Exclusive Pattern