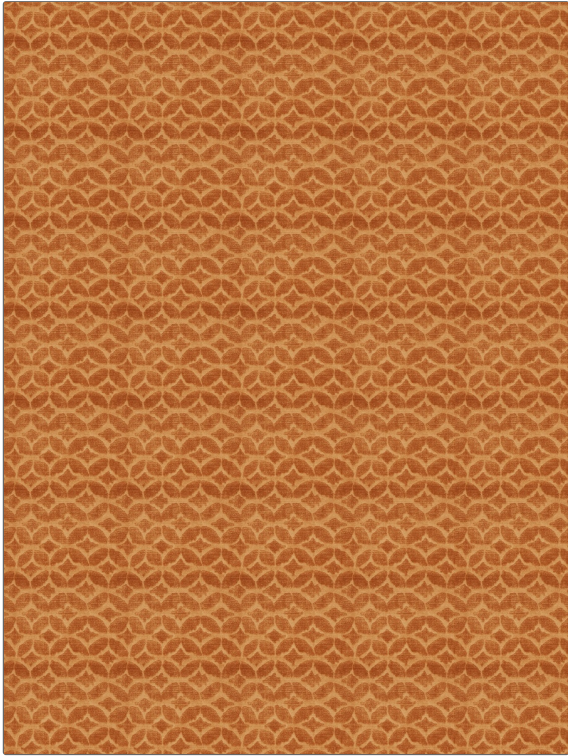


**PATTERN** Couture Velvet  
**COLOR** Canyon

<b>BRAND</b>	<b>APPLICATION</b>
Fabricut	Fabric
<b>USES</b>	<b>CATEGORIES</b>
Bedding, Drapery, Multipurpose	Velvet / Grospoint
<b>COLORS</b>	<b>DESIGN TYPES</b>
Orange / Spice	Small Scale Woven, Ogee, Dots / Circles
<b>SCALE</b>	<b>RAILROADED</b>
Small	Not Railroaded



<b>WIDTH</b>	<b>VERTICAL REPEAT</b>	<b>HORIZONTAL REPEAT</b>	<b>CONTENT</b>
54.00 in (137.16 cm)	4.50 in (11.43 cm)	5.40 in (13.72 cm)	100% Polyester
<b>BACKING</b>	<b>FIRE CODES</b>	<b>DOUBLE RUBS</b>	<b>PRODUCT NUMBER</b>
Light Acrylic Backing	UFAC Class I, Passes NFPA 260	Exceeds 20,000 Double Rubs (Wyzenbeek Method)	4606506
<b>COUNTRY</b>	<b>CLEANING CODES</b>		
China	S		

**ADDITIONAL PRODUCT NOTES**

Light Acrylic Backing, Exclusive Pattern