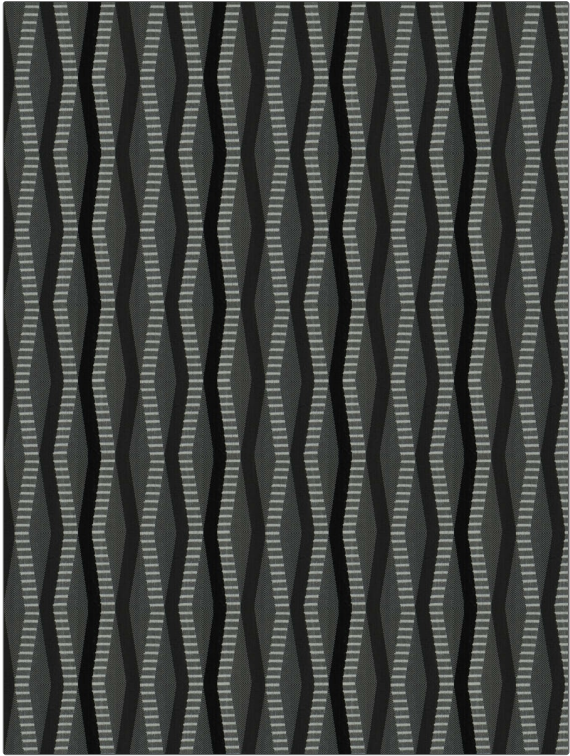


# Fabric Product Details

**PATTERN** After Party  
**COLOR** Fossil

<b>BRAND</b>	<b>APPLICATION</b>
<b>Fabricut</b>	<b>Fabric</b>
<b>USES</b>	<b>CATEGORIES</b>
<b>Upholstery</b>	<b>Wovens, Wovens, Chenille</b>
<b>COLORS</b>	<b>DESIGN TYPES</b>
<b>Black, Grey</b>	<b>Geometric, Stripes, Chevron, Contemporary / Modern</b>
<b>SCALE</b>	<b>RAILROADED</b>
<b>Large</b>	<b>Railroaded</b>



<b>WIDTH</b>	<b>FINISH</b>	<b>VERTICAL REPEAT</b>	<b>HORIZONTAL REPEAT</b>
<b>57.00 in (144.78 cm)</b>	<b>Soil &amp; Stain Repellent Finish</b>	<b>7.25 in (18.42 cm)</b>	<b>6.00 in (15.24 cm)</b>
<b>CONTENT</b>	<b>FIRE CODES</b>	<b>DOUBLE RUBS</b>	<b>PRODUCT NUMBER</b>
<b>100% Polyester</b>	<b>Cal Tb 117-2013, UFAC Class I / NFPA 260</b>	<b>Exceeds 63,000 Double Rubs (Wyzenbeek Method)</b>	<b>4134202</b>
<b>COUNTRY</b>	<b>CLEANING CODES</b>		
<b>USA</b>	<b>WS</b>		

**ADDITIONAL PRODUCT NOTES**

**Soil & Stain Repellent Finish, 100% Acrylic Backing, Shown Railroaded, Exclusive Pattern**