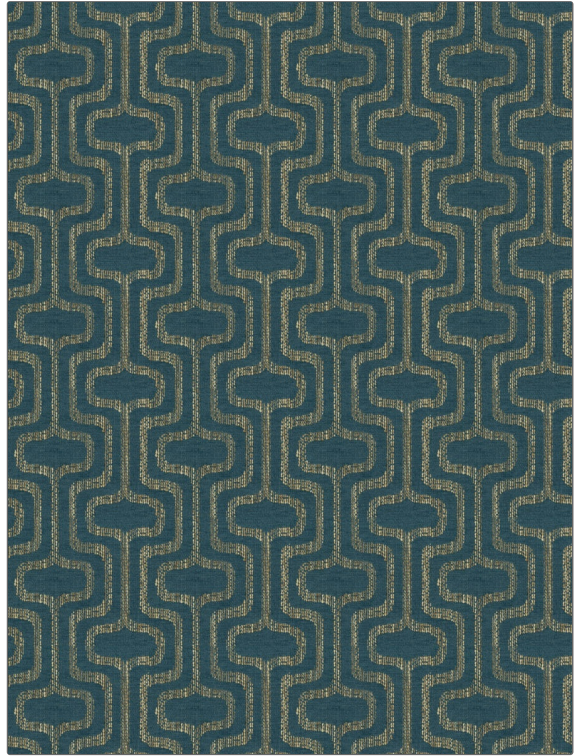


# Fabric Product Details

**PATTERN** Confab  
**COLOR** Peacock

<b>BRAND</b>	<b>APPLICATION</b>
Fabricut	Fabric
<b>USES</b>	<b>CATEGORIES</b>
Upholstery	Wovens, Wovens, Chenille
<b>COLORS</b>	<b>DESIGN TYPES</b>
Aqua / Teal	Geometric, Lattice / Fretwork, Contemporary / Modern, Diamond
<b>SCALE</b>	<b>RAILROADED</b>
Large	Not Railroaded



<b>WIDTH</b>	<b>FINISH</b>	<b>VERTICAL REPEAT</b>	<b>HORIZONTAL REPEAT</b>
54.00 in (137.16 cm)	Soil & Stain Repellent Finish	6.75 in (17.14 cm)	6.75 in (17.14 cm)
<b>CONTENT</b>	<b>FIRE CODES</b>	<b>DOUBLE RUBS</b>	<b>PRODUCT NUMBER</b>
79% Polyester, 21% Acrylic	Cal Tb 117-2013, UFAC Class I / NFPA 260	Exceeds 50,000 Double Rubs (Wyzenbeek Method)	4132604
<b>COUNTRY</b>	<b>CLEANING CODES</b>		
Turkey	S		

**ADDITIONAL PRODUCT NOTES**  
 Soil & Stain Repellent Finish, Passes 35,000 Martindale Tst, 100% Acrylic Backing, Exclusive Pattern