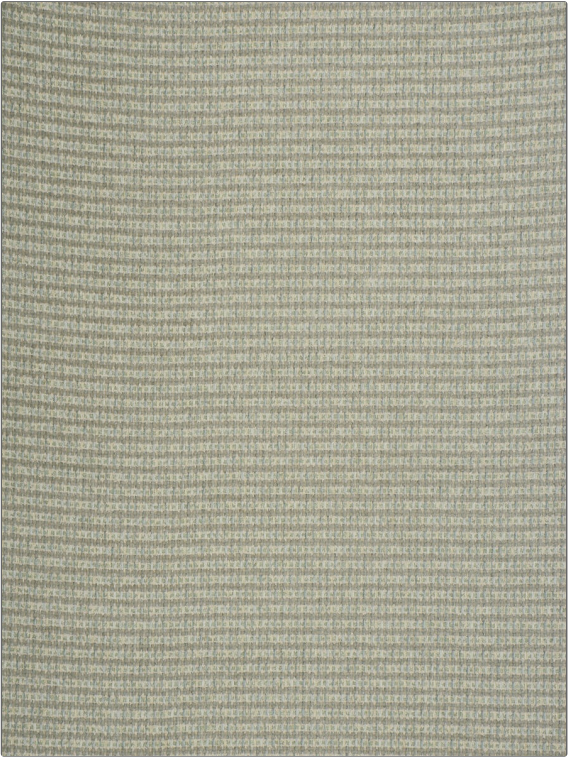


PATTERN	Rizzio
COLOR	11

BRAND	APPLICATION
Fabricut	Fabric
USES	CATEGORIES
Upholstery	Wovens, Chenille
COLORS	DESIGN TYPES
Grey, Light Blue	Texture Plain
RAILOADED	
Not Railroaded	



WIDTH	FINISH	VERTICAL REPEAT	HORIZONTAL REPEAT
54.00 in (137.16 cm)	Soil & Stain Repellent Finish	0.00 in (0.00 cm)	0.00 in (0.00 cm)
CONTENT	BACKING	FIRE CODES	DOUBLE RUBS
57% Polyester, 26% Rayon, 17% Cotton	100% Latex Backing	UFAC Class I / NFPA 260	Exceeds 30,000 Double Rubs (Wyzenbeek Method)
PRODUCT NUMBER	COUNTRY	CLEANING CODES	
3886411	China	S	

ADDITIONAL PRODUCT NOTES
Soil & Stain Repellent Finish, Ca Tb 117-2013, 100% Latex Backing, Exclusive Pattern