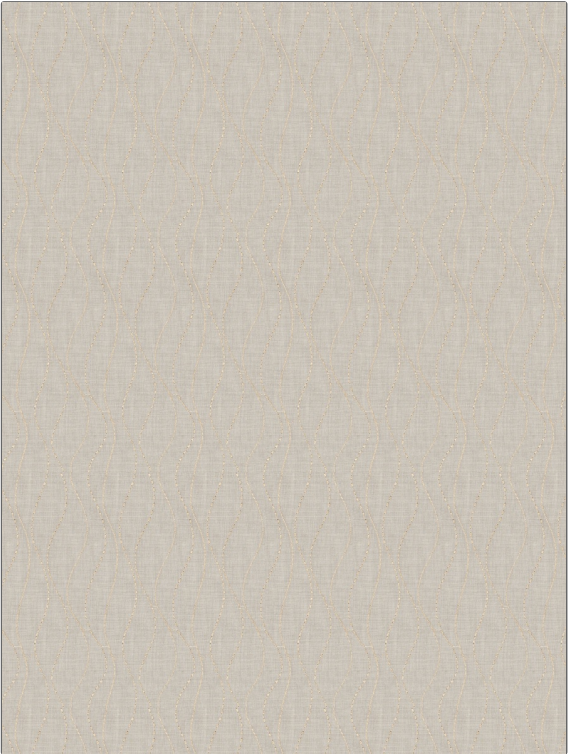


PATTERN	Jo Jo
COLOR	Tan



BRAND	APPLICATION
Fabricut	Fabric
USES	CATEGORIES
Drapery	Sheer, Crewels / Embroideries
COLORS	DESIGN TYPES
Beige, Gold	Embroidery, Contemporary / Modern, Abstract
SCALE	RAILOADED
Medium	Not Railed

WIDTH	VERTICAL REPEAT	HORIZONTAL REPEAT	CONTENT
53.00 in (134.62 cm)	10.50 in (26.67 cm)	4.20 in (10.67 cm)	Base: 100% Polyester Embroidery: 100% Polyester
BACKING	FIRE CODES	PRODUCT NUMBER	COUNTRY
	Passes "NFPA 701" 2004	3271505	Turkey
CLEANING CODES			
S			

ADDITIONAL PRODUCT NOTES
Embroidered Textiles Are Not, Guaranteed For Precise Color, Matching And Colorfastness., Color Placement Of Embroidery, May Vary. All Measurements, Quoted For Repeats Are, Approximate.