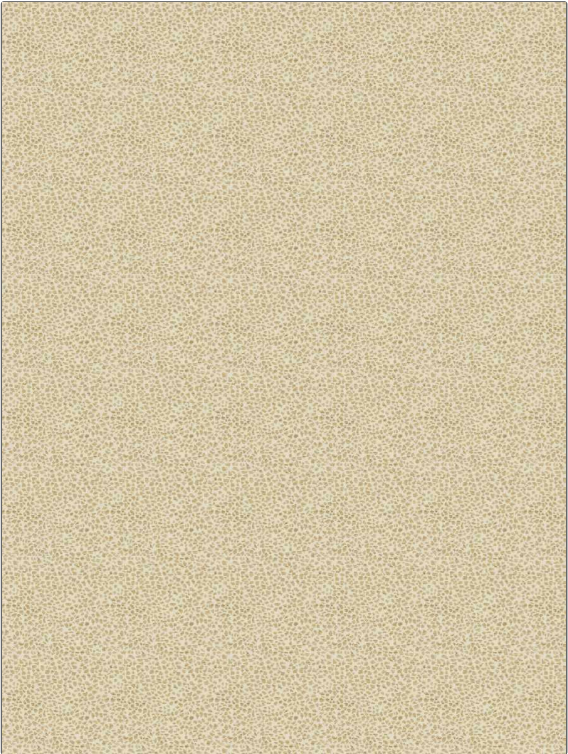


PATTERN	<b>Lysiloma</b>
COLOR	<b>Natural</b>

BRAND	APPLICATION
<b>Fabricut</b>	<b>Fabric</b>
USES	CATEGORIES
<b>Bedding, Drapery, Multipurpose</b>	<b>Wovens, Chenille</b>
BOOK	COLORS
<b>Natural Nuances (5 Books) Clay</b>	<b>Beige</b>
DESIGN TYPES	SCALE
<b>Small Scale Woven, Check / Plaid, Contemporary / Modern, Animal Skins</b>	<b>Small</b>
RAILROADED	
<b>Not Railroaded</b>	



WIDTH	VERTICAL REPEAT	HORIZONTAL REPEAT	CONTENT
<b>56.00 in (142.24 cm)</b>	<b>4.62 in (11.73 cm)</b>	<b>5.00 in (12.70 cm)</b>	<b>64% Polyester, 36% Cotton</b>
BACKING	FIRE CODES	DOUBLE RUBS	PRODUCT NUMBER
	<b>UFAC Class I</b>	<b>Exceeds 51,000 Double Rubs (Wyzenbeek Method)</b>	<b>3057302</b>
DATE BOOKED	COUNTRY	CLEANING CODES	
<b>12/2020</b>	<b>India</b>	<b>S</b>	

ADDITIONAL PRODUCT NOTES
<b>Ca Tb 117-2013</b>