

**PATTERN** Cher's Wave  
**COLOR** Linen

**BRAND**  
**Fabricut**

**APPLICATION**  
**Fabric**

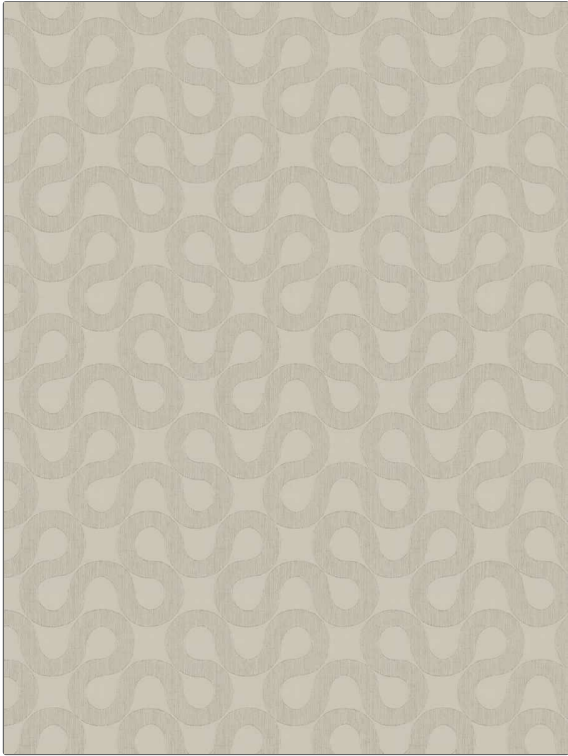
**CATEGORIES**  
**Wide Width, NFPA 701 FR, Washable, Eco / Environment Plus**

**COLORS**  
**Linen**

**DESIGN TYPES**  
**Contemporary / Modern, Scrollwork**

**SCALE**  
**Medium**

**RAILROADED**  
**Railroaded**



| WIDTH                 | VERTICAL REPEAT                 | HORIZONTAL REPEAT  | CONTENT                               |
|-----------------------|---------------------------------|--------------------|---------------------------------------|
| 122.00 in (309.88 cm) | 9.49 in (24.10 cm)              | 9.33 in (23.70 cm) | 87% Recycled Polyester, 13% Polyester |
| BACKING               | FIRE CODES                      | PRODUCT NUMBER     | COUNTRY                               |
|                       | Passes NFPA 701, Passes MVS 302 | 1978805            | India                                 |
| CLEANING CODES        |                                 |                    |                                       |
| S                     |                                 |                    |                                       |

**ADDITIONAL PRODUCT NOTES**

Oeko Tex Standard 100, Iso 14001, Ca Tb 117-2013, Shown Railroaded, Exclusive Pattern, Din 4102 Bi, Bs 5867 Part 2 Type B & C