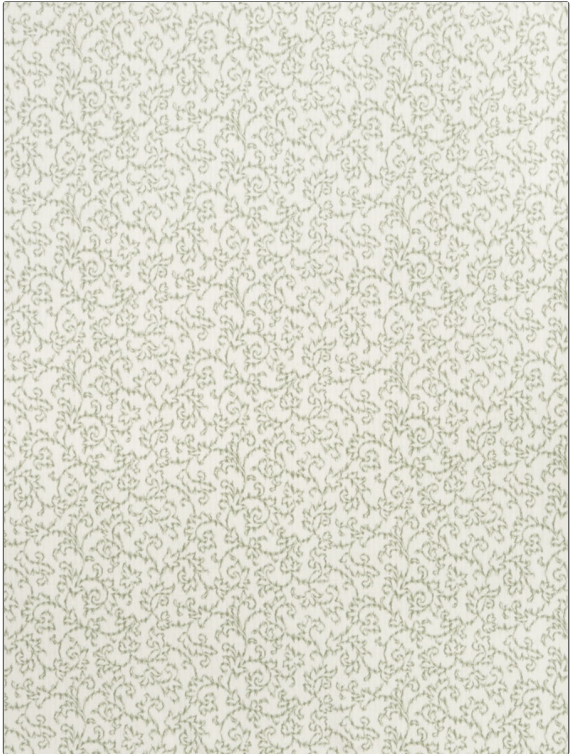


|         |          |
|---------|----------|
| PATTERN | Gertrude |
| COLOR   | 03       |

|   |   |
|---|---|
| BRAND   | APPLICATION   |
| Fabricut                                      | Fabric  |
| USES  | CATEGORIES  |
| Bedding, Drapery,<br>Multipurpose, Upholstery | Wovens  |
| COLORS  | DESIGN TYPES  |
| Green, Off White / Ivory                      | Flamestitch, Floral,<br>Jacquard Pattern, Leaves,<br>Scrollwork |
| SCALE   | RAILROADED  |
| Small   | Not Railroaded  |



|                       |                               |                               |   |
|-----------------------|-------------------------------|-------------------------------|---|
| WIDTH                 | FINISH                        | VERTICAL REPEAT               | HORIZONTAL REPEAT                             |
| 54.00 in (137.16 cm)  | Soil & Stain Repellent Finish | 6.70 in (17.02 cm)            | 13.50 in (34.29 cm)                           |
| CONTENT               | BACKING                       | FIRE CODES                    | DOUBLE RUBS                                   |
| 52% Cotton, 48% Rayon |                               | UFAC Class I, Passes NFPA 260 | Exceeds 25,000 Double Rubs (Wyzenbeek Method) |
| PRODUCT NUMBER        | COUNTRY                       | CLEANING CODES                |   |
| 1698403               | China                         | S                             |   |

|  |
|--|
| ADDITIONAL PRODUCT NOTES                         |
| Soil & Stain Repellent Finish, Exclusive Pattern |