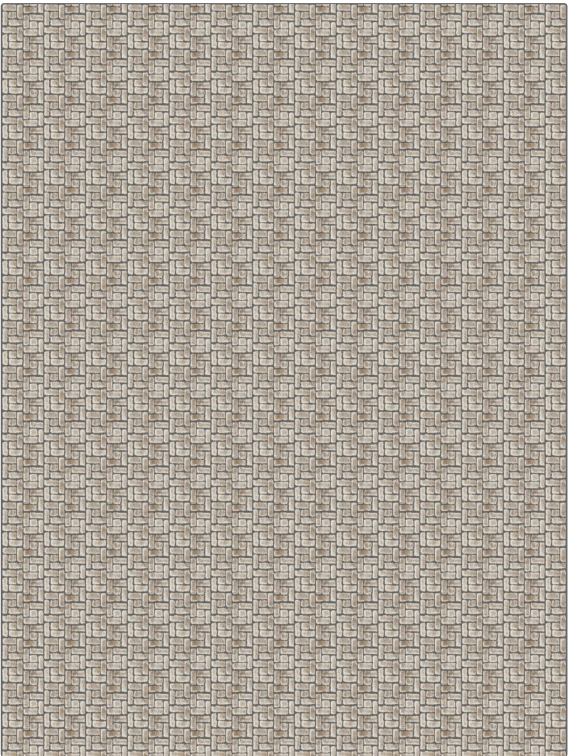


PATTERN	Bari
COLOR	Linen

BRAND	APPLICATION
Fabricut	Fabric
USES	CATEGORIES
Bedding, Drapery, Multipurpose, Upholstery	Velvet / Grospoint, Wovens
COLORS	DESIGN TYPES
Grey	Geometric, Jacquard Pattern, Check / Plaid, Contemporary / Modern
SCALE	RAILOADED
Small	Not Railroaded



WIDTH	FINISH	VERTICAL REPEAT	HORIZONTAL REPEAT
54.00 in (137.16 cm)	Soil & Stain Repellent Finish	2.00 in (5.08 cm)	2.00 in (5.08 cm)
CONTENT	BACKING	FIRE CODES	DOUBLE RUBS
53% Rayon, 47% Polyester		UFAC Class I, Passes NFPA 260	Exceeds 35,000 Double Rubs (Wyzenbeek Method)
PRODUCT NUMBER	COUNTRY	CLEANING CODES	
0168806	China	S	

ADDITIONAL PRODUCT NOTES
Soil & Stain Repellent Finish, Ca Tb 117-2013