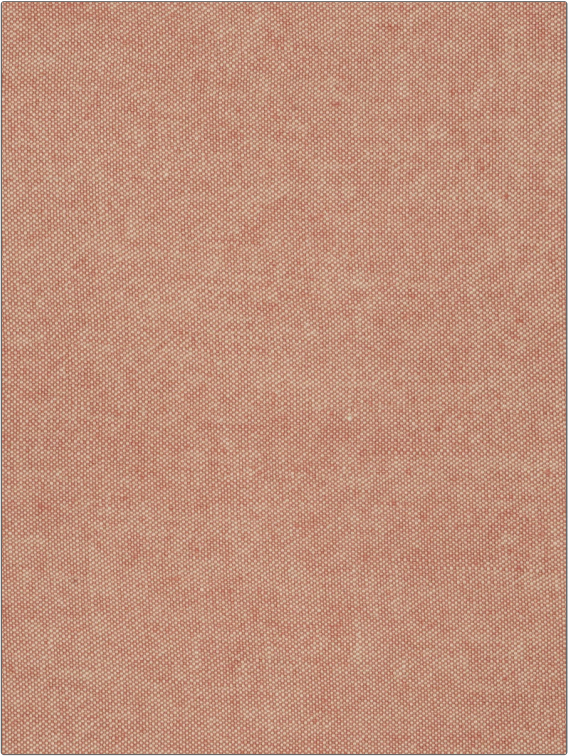


PATTERN	Albi Linen
COLOR	13

BRAND	APPLICATION
Fabricut	Fabric
USES	CATEGORIES
Bedding, Drapery, Multipurpose, Upholstery	Solids / Small Scale Patterns, Linen
COLORS	DESIGN TYPES
Orange / Spice, Coral / Peach	Solid, Texture Plain
RAILROADED	
Not Railroaded	



WIDTH	VERTICAL REPEAT	HORIZONTAL REPEAT	CONTENT
54.00 in (137.16 cm)	0.00 in (0.00 cm)	0.00 in (0.00 cm)	100% Linen
BACKING	FIRE CODES	DOUBLE RUBS	PRODUCT NUMBER
	UFAC Class I, Passes NFPA 260	Exceeds 25,000 Double Rubs	1680513
COUNTRY	CLEANING CODES		
China	S		

ADDITIONAL PRODUCT NOTES
Passes 25,000 Martindale Tst, Ca Tb 117-2013, Exclusive Pattern, Sand Washed