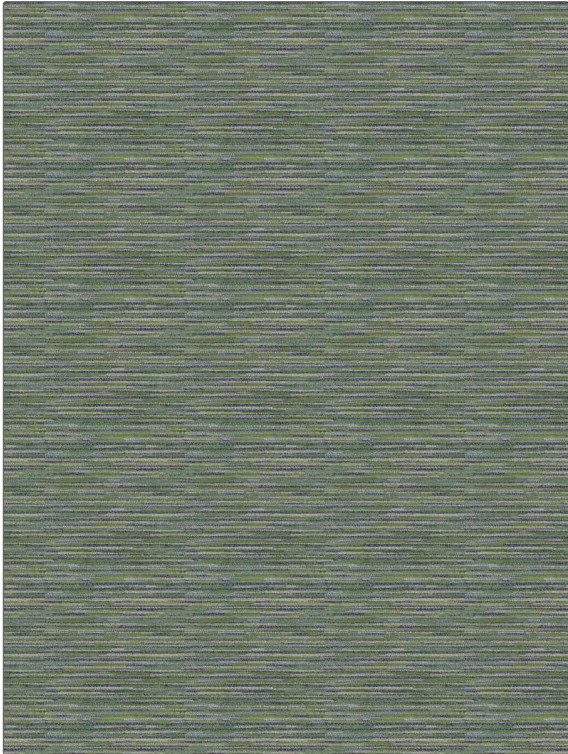


**PATTERN** Healdsburg Texture  
**COLOR** Forest

<b>BRAND</b>	<b>APPLICATION</b>
Fabricut	Fabric
<b>USES</b>	<b>CATEGORIES</b>
Upholstery	Wovens, Chenille
<b>BOOK</b>	<b>COLORS</b>
Kendall Wilkinson Vignettes (3 Books) Sapphire / Forest	Blue, Green
<b>DESIGN TYPES</b>	<b>SCALE</b>
Abstract	Small
<b>RAILROADED</b>	
Not Railroaded	



<b>WIDTH</b>	<b>VERTICAL REPEAT</b>	<b>HORIZONTAL REPEAT</b>	<b>CONTENT</b>
56.00 in (142.24 cm)	6.80 in (17.27 cm)	6.70 in (17.02 cm)	61% Viscose, 20% Polyester, 19% Cotton
<b>BACKING</b>	<b>FIRE CODES</b>	<b>DOUBLE RUBS</b>	<b>PRODUCT NUMBER</b>
	UFAC Class I / NFPA 260	Exceeds 36,000 Double Rubs (Wyzenbeek Method)	1636701
<b>DATE BOOKED</b>	<b>COUNTRY</b>	<b>CLEANING CODES</b>	
05/2024	Turkey	S	

**ADDITIONAL PRODUCT NOTES**  
 Passes 27,000 Martindale Tst, Ca Tb 117-2013, Exclusive Pattern