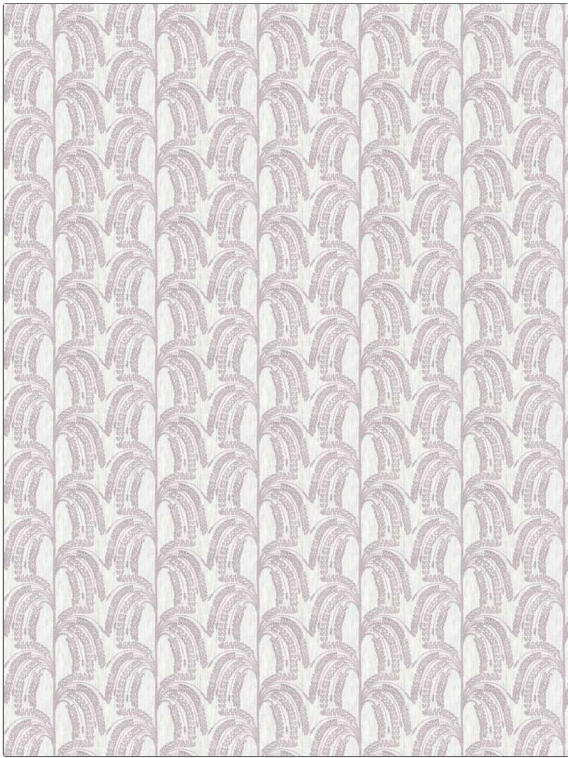


**PATTERN** Anna Vine  
**COLOR** 04

<b>BRAND</b>	<b>APPLICATION</b>
Fabricut	Fabric
<b>USES</b>	<b>CATEGORIES</b>
Bedding, Drapery	Crewels / Embroideries
<b>COLORS</b>	<b>DESIGN TYPES</b>
Lavender / Purple	Embroidery, Floral, Leaves
<b>SCALE</b>	<b>RAILROADED</b>
Medium	Not Railroaded



<b>WIDTH</b>	<b>VERTICAL REPEAT</b>	<b>HORIZONTAL REPEAT</b>	<b>CONTENT</b>
54.00 in (137.16 cm)	3.14 in (7.98 cm)	4.88 in (12.40 cm)	Embroidery: 50% Viscose, 50% Cotton, Base: 52% Polyester, 48% Cotton
<b>BACKING</b>	<b>FIRE CODES</b>	<b>PRODUCT NUMBER</b>	<b>COUNTRY</b>
	UFAC Class I / NFPA 260	1563104	India

**ADDITIONAL PRODUCT NOTES**

Ca Tb 117-2013, Exclusive Pattern, Dry Clean Only, Hand-Embroidered Crewels Are, Not Guaranteed Against Fading, Or For Precise Color Matching, Colorfastness And Durability., Color Placement Of Hand-, Embroidered Crewelwork May, Vary. Cutting From Current, Stock Is Recommended. All, Measurements Quoted For, Repeats Are Approximate., Embroidered Textiles Are Not, Guaranteed For Precise Color, Matching And Colorfastness., Color Placement Of Embroidery, May Vary. All Measurements, Quoted For Repeats Are, Approximate.