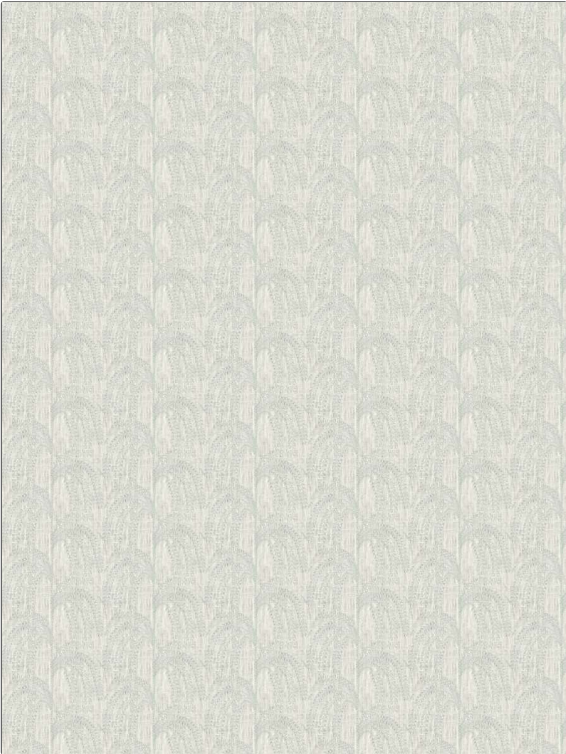


PATTERN	Anna Vine
COLOR	03

BRAND	APPLICATION
Fabricut	Fabric
USES	CATEGORIES
Bedding, Drapery	Crewels / Embroideries
COLORS	DESIGN TYPES
Light Blue, Aqua / Teal	Embroidery, Floral, Leaves
SCALE	RAILOADED
Medium	Not Railed



WIDTH	VERTICAL REPEAT	HORIZONTAL REPEAT	CONTENT
54.00 in (137.16 cm)	3.14 in (7.98 cm)	4.88 in (12.40 cm)	Embroidery: 50% Viscose, 50% Cotton, Base: 52% Polyester, 48% Cotton
BACKING	FIRE CODES	PRODUCT NUMBER	COUNTRY
	UFAC Class I / NFPA 260	1563103	India

ADDITIONAL PRODUCT NOTES
Ca Tb 117-2013, Exclusive Pattern, Dry Clean Only, Hand-Embroidered Crewels Are, Not Guaranteed Against Fading, Or For Precise Color Matching, Colorfastness And Durability., Color Placement Of Hand-, Embroidered Crewelwork May, Vary. Cutting From Current, Stock Is Recommended. All, Measurements Quoted For, Repeats Are Approximate., Embroidered Textiles Are Not, Guaranteed For Precise Color, Matching And Colorfastness., Color Placement Of Embroidery, May Vary. All Measurements, Quoted For Repeats Are, Approximate.