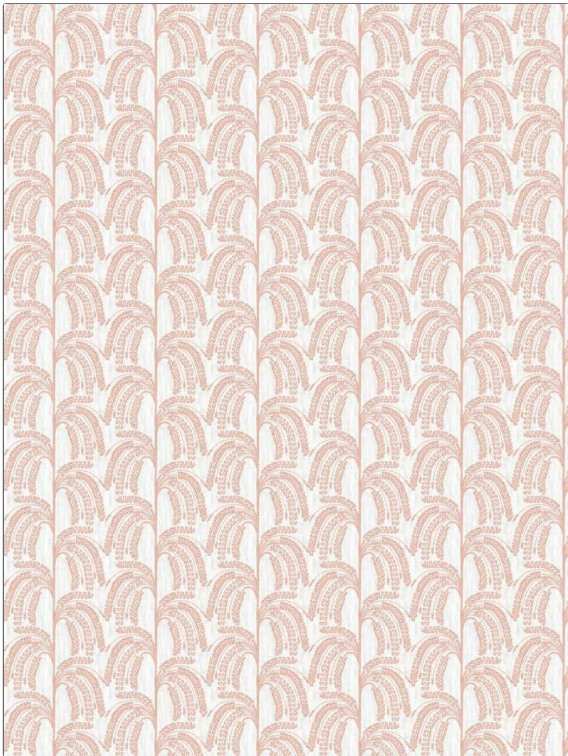


PATTERN Anna Vine
COLOR 02

BRAND	APPLICATION
Fabricut	Fabric
USES	CATEGORIES
Bedding, Drapery	Crewels / Embroideries
COLORS	DESIGN TYPES
Coral / Peach, Pink	Embroidery, Floral, Leaves
SCALE	RAILROADED
Medium	Not Railroaded



WIDTH	VERTICAL REPEAT	HORIZONTAL REPEAT	CONTENT
54.00 in (137.16 cm)	3.14 in (7.98 cm)	4.88 in (12.40 cm)	Embroidery: 50% Viscose, 50% Cotton, Base: 52% Polyester, 48% Cotton
BACKING	FIRE CODES	PRODUCT NUMBER	COUNTRY
	UFAC Class I / NFPA 260	1563102	India

ADDITIONAL PRODUCT NOTES

Ca Tb 117-2013, Exclusive Pattern, Dry Clean Only, Hand-Embroidered Crewels Are, Not Guaranteed Against Fading, Or For Precise Color Matching, Colorfastness And Durability., Color Placement Of Hand-, Embroidered Crewelwork May, Vary. Cutting From Current, Stock Is Recommended. All, Measurements Quoted For, Repeats Are Approximate., Embroidered Textiles Are Not, Guaranteed For Precise Color, Matching And Colorfastness., Color Placement Of Embroidery, May Vary. All Measurements, Quoted For Repeats Are, Approximate.