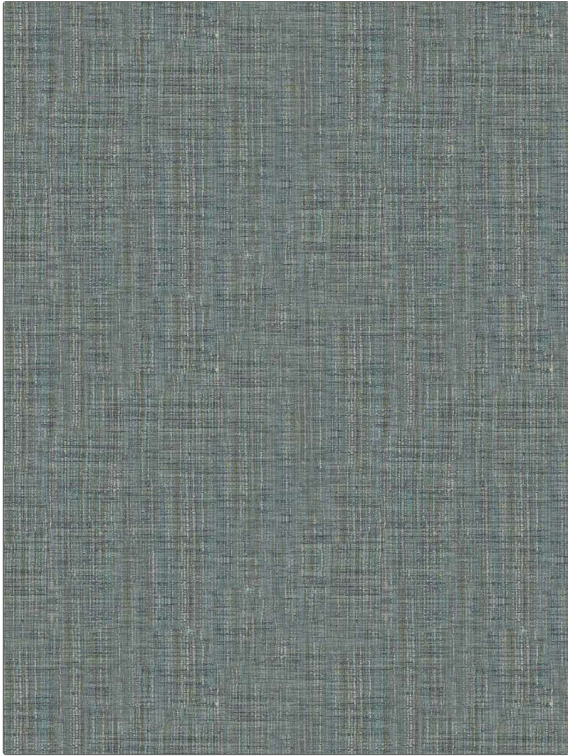


|                |               |
|----------------|---------------|
| <b>PATTERN</b> | <b>Sayzed</b> |
| <b>COLOR</b>   | <b>23</b>     |

|                           |                               |
|---------------------------|-------------------------------|
| <b>BRAND</b>              | <b>APPLICATION</b>            |
| <b>Fabricut</b>           | <b>Fabric</b>                 |
| <b>USES</b>               | <b>CATEGORIES</b>             |
| <b>Bedding, Drapery</b>   | <b>NFPA 701 FR, Faux Silk</b> |
| <b>COLORS</b>             | <b>DESIGN TYPES</b>           |
| <b>Green, Aqua / Teal</b> | <b>Texture Plain</b>          |
| <b>RAILOADED</b>          |                               |
| <b>Railroaded</b>         |                               |



|                              |  |  |  |
|------------------------------|--|--|--|
| <b>WIDTH</b>                 | <b>VERTICAL REPEAT</b>                 | <b>HORIZONTAL REPEAT</b>                             | <b>CONTENT</b>                               |
| <b>118.00 in (299.72 cm)</b> | <b>0.00 in (0.00 cm)</b>               | <b>0.00 in (0.00 cm)</b>                             | <b>62% Recycled Polyester, 38% Polyester</b> |
| <b>BACKING</b>               | <b>FIRE CODES</b>                      | <b>DOUBLE RUBS</b>                                   | <b>PRODUCT NUMBER</b>                        |
|                              | <b>Passes NFPA 701, Passes MVS 302</b> | <b>Exceeds 40,300 Double Rubs (Wyzenbeek Method)</b> | <b>1551623</b>                               |
| <b>COUNTRY</b>               | <b>CLEANING CODES</b>                  |  |  |
| <b>India</b>                 | <b>S</b>                               |  |  |

|   |
|---|
| <b>ADDITIONAL PRODUCT NOTES</b>   |
| <b>Passes 14,000 Martindale Tst, Oeko Tex Standard 100, Iso 14001, In Compliance With Ca Prop 65, Ca Tb 117-2013, Shown Railroaded, Exclusive Pattern, Eco / Environment Plus</b> |