

PATTERN Ausha
COLOR Linen

BRAND

Fabricut

APPLICATION

Fabric

USES

Bedding, Drapery

CATEGORIES

Crewels / Embroideries

BOOK

**Natural Nuances (5 Books)
Harvest**

COLORS

Linen

DESIGN TYPES

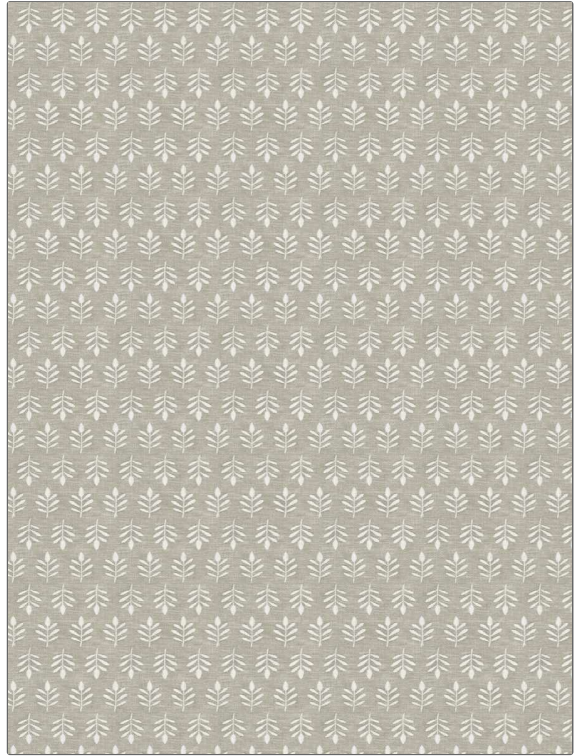
Embroidery, Leaves

SCALE

Small

RAILROADED

Not Railroaded



WIDTH

51.00 in (129.54 cm)

VERTICAL REPEAT

3.13 in (7.95 cm)

HORIZONTAL REPEAT

1.63 in (4.14 cm)

CONTENT

**Embroidery: 100%
Polyester, Base: 71%
Polyester, 29% Cotton**

BACKING

FIRE CODES

UFAC Class I

PRODUCT NUMBER

1507302

DATE BOOKED

01/2024

COUNTRY

India

CLEANING CODES

S

ADDITIONAL PRODUCT NOTES

Ca Tb 117-2013, Embroidered Textiles Are Not, Guaranteed For Precise Color, Matching And Colorfastness., Color Placement Of Embroidery, May Vary. All Measurements, Quoted For Repeats Are, Approximate.