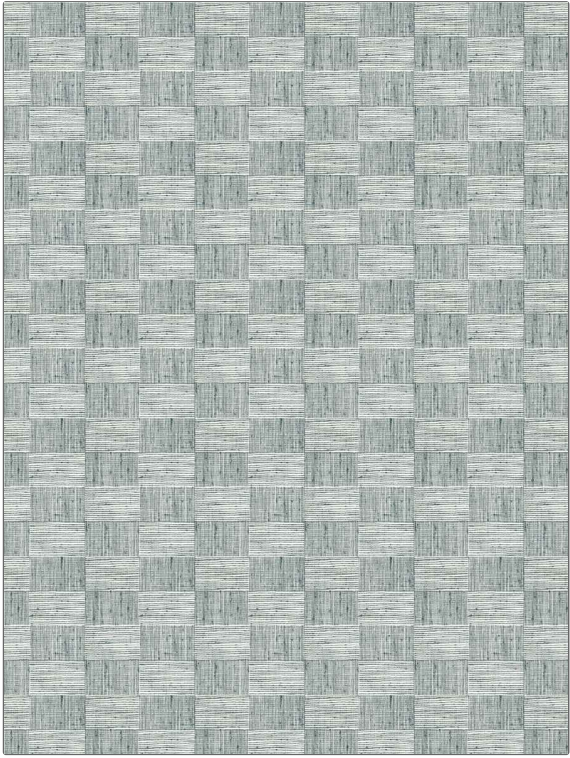


PATTERN Finneas
COLOR Chambray

BRAND	APPLICATION
Fabricut	Fabric
USES	CATEGORIES
Bedding, Drapery, Multipurpose, Upholstery	Wovens
BOOK	COLORS
Natural Nuances (5 Books) Chambray	Blue
DESIGN TYPES	SCALE
Geometric, Small Scale Woven, Contemporary / Modern	Medium
RAILROADED	
Not Railroaded	



WIDTH	VERTICAL REPEAT	HORIZONTAL REPEAT	CONTENT
54.00 in (137.16 cm)	3.18 in (8.08 cm)	5.25 in (13.34 cm)	62% Polyester, 38% Cotton
BACKING	FIRE CODES	DOUBLE RUBS	PRODUCT NUMBER
	UFAC Class I	Exceeds 51,000 Double Rubs (Wyzenbeek Method)	1467104
DATE BOOKED	COUNTRY	CLEANING CODES	
01/2024	India	S	

ADDITIONAL PRODUCT NOTES

Ca Tb 117-2013