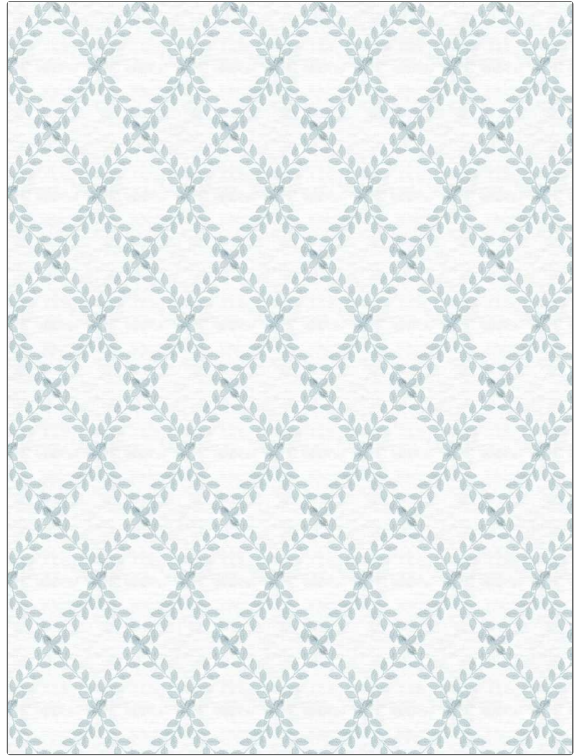


**PATTERN** Myna  
**COLOR** 02

<b>BRAND</b>	<b>APPLICATION</b>
Fabricut	Fabric
<b>USES</b>	<b>CATEGORIES</b>
Bedding, Drapery	Crewels / Embroideries
<b>COLORS</b>	<b>DESIGN TYPES</b>
Light Blue, Aqua / Teal	Leaves, Diamond
<b>SCALE</b>	<b>RAILOADED</b>
Medium	Not Railed



<b>WIDTH</b>	<b>VERTICAL REPEAT</b>	<b>HORIZONTAL REPEAT</b>	<b>CONTENT</b>
52.00 in (132.08 cm)	6.50 in (16.51 cm)	4.25 in (10.80 cm)	Embroidery: 100% Viscose, Base: 71% Polyester, 29% Cotton
<b>BACKING</b>	<b>FIRE CODES</b>	<b>PRODUCT NUMBER</b>	<b>COUNTRY</b>
	UFAC Class I	1464202	India
<b>CLEANING CODES</b>			
S			

**ADDITIONAL PRODUCT NOTES**

Ca Tb 117-2013, Embroidered Textiles Are Not, Guaranteed For Precise Color, Matching And Colorfastness., Color Placement Of Embroidery, May Vary. All Measurements, Quoted For Repeats Are, Approximate.