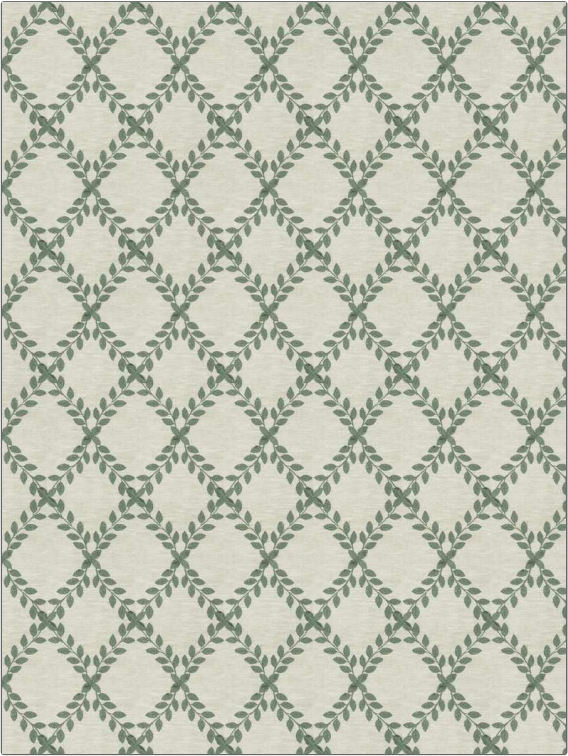


PATTERN	Myna
COLOR	Loden
BRAND	APPLICATION
Fabricut	Fabric
USES	CATEGORIES
Bedding, Drapery	Crewels / Embroideries
BOOK	COLORS
Natural Nuances (5 Books) Willow	Green
DESIGN TYPES	SCALE
Leaves, Diamond	Medium
RAILROADED	
Not Railroaded	



WIDTH	VERTICAL REPEAT	HORIZONTAL REPEAT	CONTENT
52.00 in (132.08 cm)	6.50 in (16.51 cm)	4.25 in (10.80 cm)	Embroidery: 100% Viscose, Base: 71% Polyester, 29% Cotton
BACKING	FIRE CODES	PRODUCT NUMBER	DATE BOOKED
	UFAC Class I	1464101	01/2024
COUNTRY	CLEANING CODES		
India	S		

ADDITIONAL PRODUCT NOTES
Ca Tb 117-2013, Embroidered Textiles Are Not, Guaranteed For Precise Color, Matching And Colorfastness., Color Placement Of Embroidery, May Vary. All Measurements, Quoted For Repeats Are, Approximate.