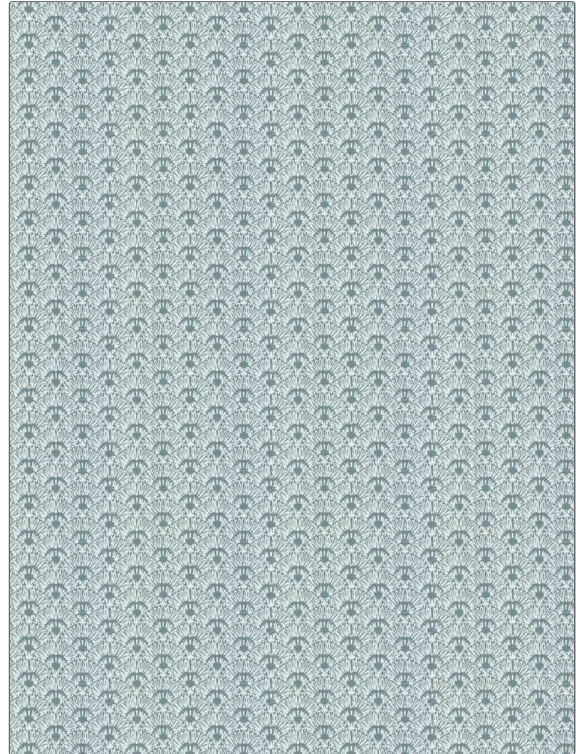


**PATTERN** Eulla  
**COLOR** Chambray

<b>BRAND</b>	<b>APPLICATION</b>
<b>Fabricut</b>	<b>Fabric</b>
<b>USES</b>	<b>CATEGORIES</b>
<b>Bedding, Drapery, Multipurpose</b>	<b>Prints</b>
<b>BOOK</b>	<b>COLORS</b>
<b>Natural Nuances (5 Books) Willow</b>	<b>Blue, Light Blue</b>
<b>DESIGN TYPES</b>	<b>SCALE</b>
<b>Print Pattern, Bargello</b>	<b>Small</b>
<b>RAILOADED</b>	
<b>Not Railroaded</b>	



<b>WIDTH</b>	<b>VERTICAL REPEAT</b>	<b>HORIZONTAL REPEAT</b>	<b>CONTENT</b>
<b>54.00 in (137.16 cm)</b>	<b>1.68 in (4.27 cm)</b>	<b>3.86 in (9.80 cm)</b>	<b>100% Cotton</b>
<b>BACKING</b>	<b>FIRE CODES</b>	<b>DOUBLE RUBS</b>	<b>PRODUCT NUMBER</b>
	<b>UFAC Class I</b>	<b>Exceeds 9,000 Double Rubs (Wyzenbeek Method)</b>	<b>1459901</b>
<b>DATE BOOKED</b>	<b>COUNTRY</b>	<b>CLEANING CODES</b>	
<b>01/2024</b>	<b>USA</b>	<b>S</b>	