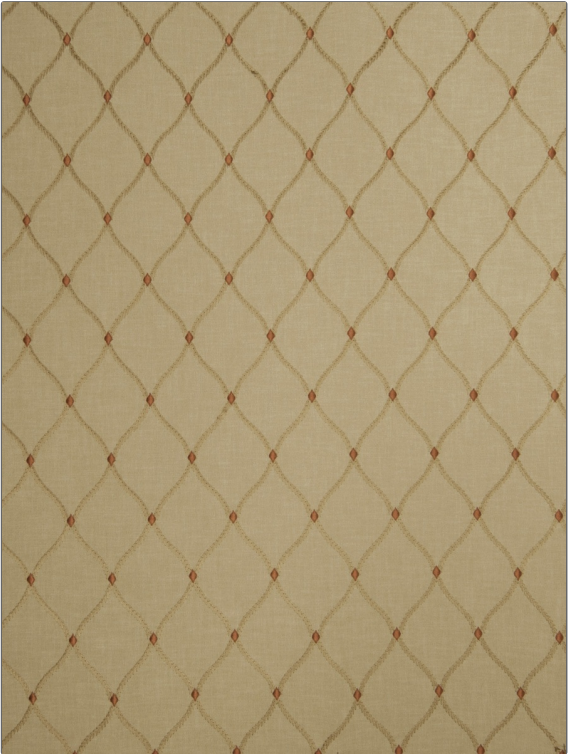


PATTERN	De Jour
COLOR	Hearth

BRAND	APPLICATION
Fabricut	Fabric
USES	CATEGORIES
Bedding, Drapery	Crewels / Embroideries
COLORS	DESIGN TYPES
Orange / Spice	Embroidery, Ogee
SCALE	RAILOADED
Medium	Not Railroaded



WIDTH	VERTICAL REPEAT	HORIZONTAL REPEAT	CONTENT
51.00 in (129.54 cm)	6.50 in (16.51 cm)	4.25 in (10.80 cm)	Embroidery: 100% Polyester, Base: 100% Polyester
BACKING	PRODUCT NUMBER	COUNTRY	CLEANING CODES
	1446901	India	S

ADDITIONAL PRODUCT NOTES
Embroidered Textiles Are Not, Guaranteed For Precise Color, Matching And Colorfastness., Color Placement Of Embroidery, May Vary. All Measurements, Quoted For Repeats Are, Approximate.