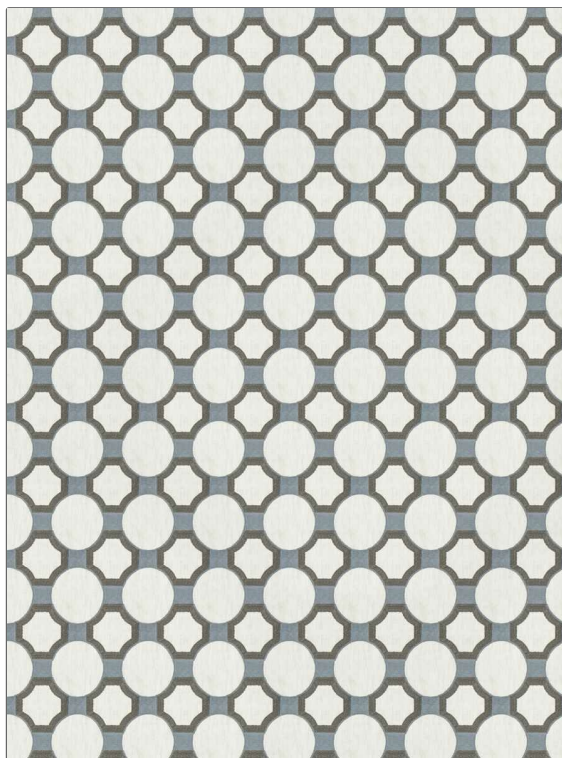


PATTERN	Cilla
COLOR	Chambray
BRAND	APPLICATION
Fabricut	Fabric
USES	CATEGORIES
Bedding, Drapery	Crewels / Embroideries
BOOK	COLORS
Natural Nuances (5 Books) Chambray	Blue
DESIGN TYPES	SCALE
Geometric, Lattice / Fretwork, Crewel	Medium
RAILROADED	
Not Railroaded	



WIDTH	VERTICAL REPEAT	HORIZONTAL REPEAT	CONTENT
54.00 in (137.16 cm)	4.75 in (12.06 cm)	3.38 in (8.59 cm)	Embroidery: 100% Cotton, Base: 52% Polyester, 48% Cotton
BACKING	FIRE CODES	PRODUCT NUMBER	DATE BOOKED
	Does Not Contain FR Chemicals, UFAC Class I / NFPA 260	1445601	01/2024
COUNTRY	CLEANING CODES		
India	S		

ADDITIONAL PRODUCT NOTES

Ca Tb 117-2013, Embroidered Textiles Are Not, Guaranteed For Precise Color, Matching And Colorfastness., Color Placement Of Embroidery, May Vary. All Measurements, Quoted For Repeats Are, Approximate.