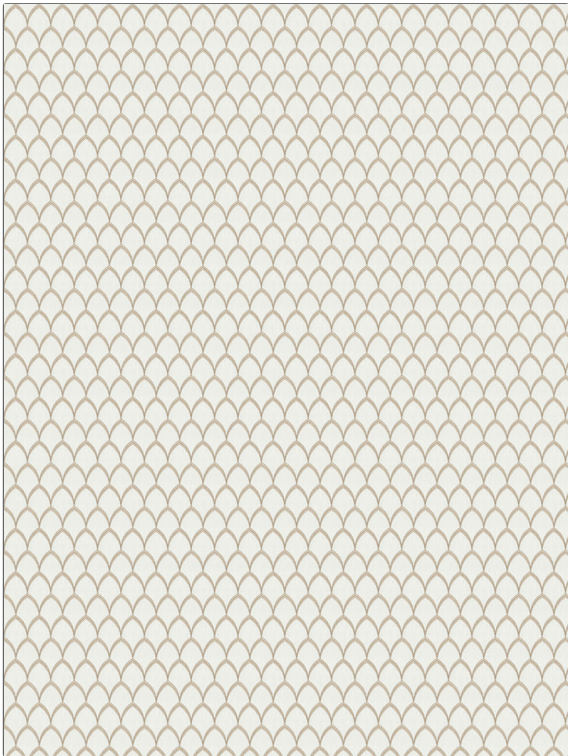


PATTERN Parthy
COLOR 03

| | |
|--------------------------------|---|
| BRAND | APPLICATION |
| Fabricut | Fabric |
| USES | CATEGORIES |
| Bedding, Drapery | Crewels / Embroideries |
| COLORS | DESIGN TYPES |
| Taupe / Tan, Off White / Ivory | Embroidery, Lattice / Fretwork, Contemporary / Modern |
| SCALE | RAILROADED |
| Medium | Not Railroaded |



| | | | |
|----------------------|------------------------|--------------------------|--|
| WIDTH | VERTICAL REPEAT | HORIZONTAL REPEAT | CONTENT |
| 51.00 in (129.54 cm) | 3.00 in (7.62 cm) | 1.12 in (2.84 cm) | Embroidery: 100% Polyester, Base: 52% Polyester, 48% Cotton |
| BACKING | PRODUCT NUMBER | COUNTRY | CLEANING CODES |
| | 1263503 | India | S |

ADDITIONAL PRODUCT NOTES

Exclusive Pattern, Embroidered Textiles Are Not, Guaranteed For Precise Color, Matching And Colorfastness., Color Placement Of Embroidery, May Vary. All Measurements, Quoted For Repeats Are, Approximate.