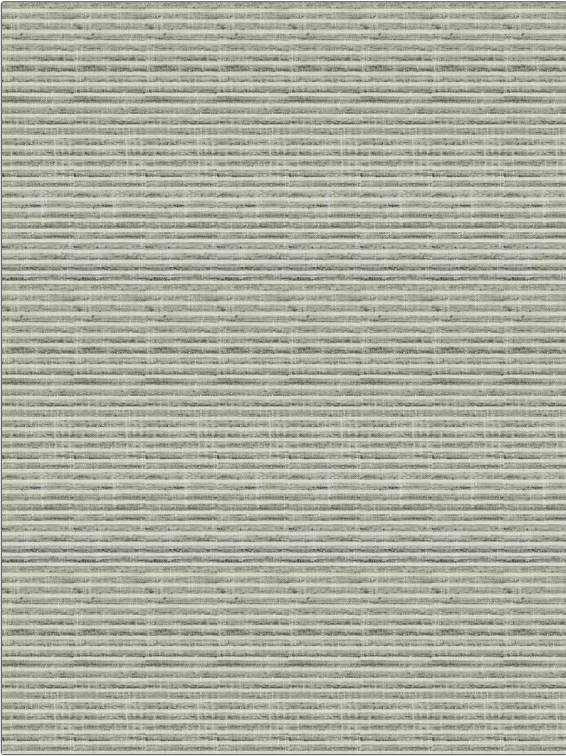


PATTERN	Shadi Stripe Charcoal	
COLOR		
BRAND	APPLICATION	
Fabricut	Fabric	
USES	CATEGORIES	
Bedding, Drapery, Multipurpose	Wovens	
BOOK	COLORS	
Natural Layers (3 Books) Dew	Grey	
DESIGN TYPES	SCALE	
Stripes	Small	
RAILOADED		
Not Railroaded		



WIDTH	VERTICAL REPEAT	HORIZONTAL REPEAT	CONTENT
54.00 in (137.16 cm)	13.50 in (34.29 cm)	0.00 in (0.00 cm)	100% Polyester
BACKING	FIRE CODES	DOUBLE RUBS	PRODUCT NUMBER
	UFAC Class I	Exceeds 50,000 Double Rubs (Wyzenbeek Method)	1253402
DATE BOOKED	COUNTRY	CLEANING CODES	
02/2020	India	S	

ADDITIONAL PRODUCT NOTES
Ca Tb 117-2013