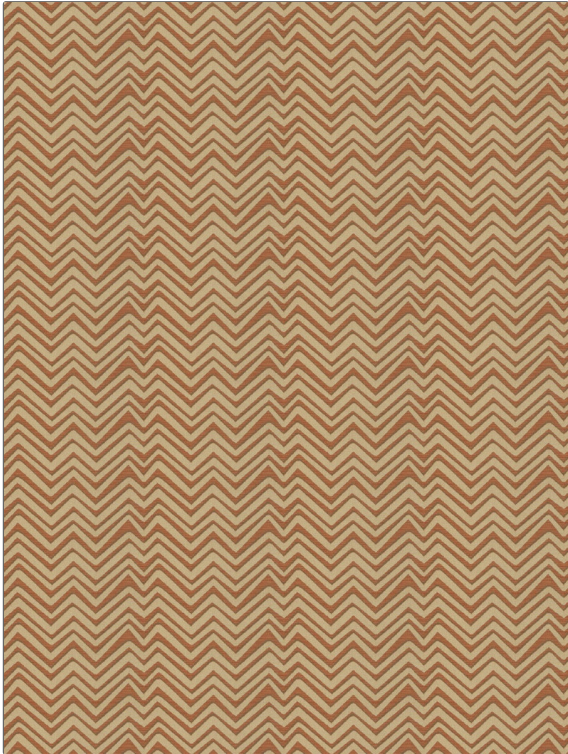


Fabric Product Details

PATTERN	Amalfi Chevron
COLOR	Cinnabar
BRAND	APPLICATION
Vervain	Fabric
USES	CATEGORIES
Bedding, Drapery, Multipurpose, Upholstery	Silk, Wovens
BOOK	COLORS
Tesori	Grey, Orange / Spice
DESIGN TYPES	SCALE
Chevron	Medium
RAILOADED	
Not Railroaded	



WIDTH	VERTICAL REPEAT	HORIZONTAL REPEAT	CONTENT
54.00 in (137.16 cm)	5.20 in (13.21 cm)	6.70 in (17.02 cm)	73% Cotton, 27% Polyester
BACKING	FIRE CODES	DOUBLE RUBS	PRODUCT NUMBER
	UFAC Class I / NFPA 260	Exceeds 51,000 Double Rubs (Wyzenbeek Method)	9688704
DATE BOOKED	COUNTRY	CLEANING CODES	
09/2018	India	S	

ADDITIONAL PRODUCT NOTES
Ca Tb 117-2013, Exclusive Pattern