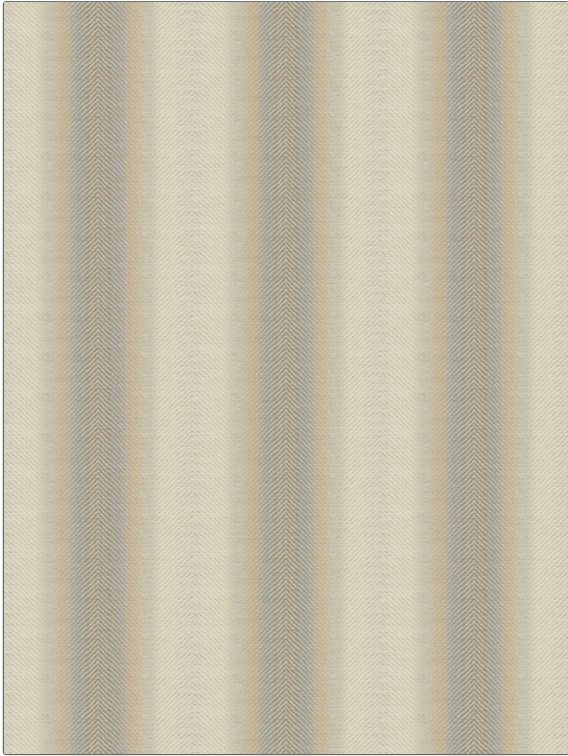


# Fabric Product Details

**PATTERN** La Scala Stripe  
**COLOR** Silver Stone

<b>BRAND</b>	<b>APPLICATION</b>
Vervain	Fabric
<b>USES</b>	<b>CATEGORIES</b>
Bedding, Multipurpose, Upholstery	Wovens, Linen
<b>BOOK</b>	<b>COLORS</b>
Tesori	Grey, Light Blue, Taupe / Tan
<b>DESIGN TYPES</b>	<b>SCALE</b>
Stripes, Chevron	Medium
<b>RAILROADED</b>	
Not Railroaded	



<b>WIDTH</b>	<b>VERTICAL REPEAT</b>	<b>HORIZONTAL REPEAT</b>	<b>CONTENT</b>
54.00 in (137.16 cm)	0.30 in (0.76 cm)	9.00 in (22.86 cm)	50% Cotton, 33% Linen, 17% Polyester
<b>BACKING</b>	<b>FIRE CODES</b>	<b>DOUBLE RUBS</b>	<b>PRODUCT NUMBER</b>
	UFAC Class I / NFPA 260	Exceeds 51,000 Double Rubs (Wyzenbeek Method)	9665802
<b>DATE BOOKED</b>	<b>COUNTRY</b>	<b>CLEANING CODES</b>	
09/2018	India	S	

**ADDITIONAL PRODUCT NOTES**

Ca Tb 117-2013, Exclusive Pattern