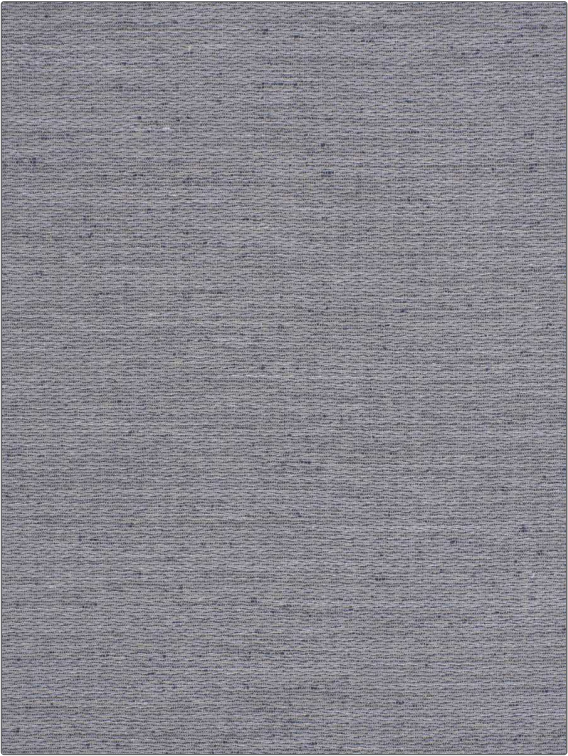


# Fabric Product Details

**PATTERN** Lynton  
**COLOR** Ink



<b>BRAND</b>	<b>APPLICATION</b>
Vervain	Fabric
<b>USES</b>	<b>CATEGORIES</b>
Bedding, Upholstery	Solids / Small Scale Patterns
<b>BOOK</b>	<b>COLORS</b>
Vervain Fall 2017 The New York Botanical Garden	Blue
<b>DESIGN TYPES</b>	<b>RAILROADED</b>
Texture Plain	Not Railroaded

<b>WIDTH</b>	<b>VERTICAL REPEAT</b>	<b>HORIZONTAL REPEAT</b>	<b>CONTENT</b>
54.00 in (137.16 cm)	0.00 in (0.00 cm)	0.00 in (0.00 cm)	37% Rayon, 34% Linen, 29% Polyester
<b>BACKING</b>	<b>FIRE CODES</b>	<b>DOUBLE RUBS</b>	<b>PRODUCT NUMBER</b>
	UFAC Class I / NFPA 260	Exceeds 15,000 Double Rubs (Wyzenbeek Method)	9025601
<b>DATE BOOKED</b>	<b>COUNTRY</b>	<b>CLEANING CODES</b>	
11/2017	USA	S	

**ADDITIONAL PRODUCT NOTES**

Exclusive Pattern