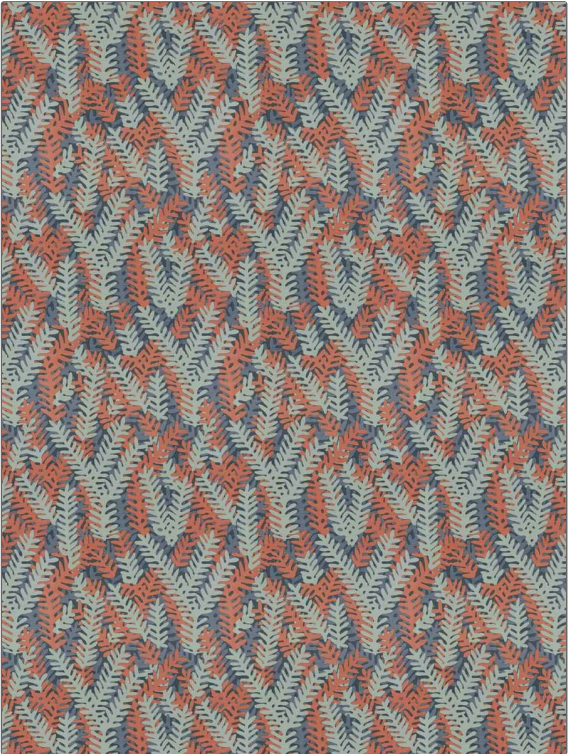


# Fabric Product Details

**PATTERN** Capistrano  
**COLOR** Rain

<b>BRAND</b>	<b>APPLICATION</b>
Vervain	Fabric
<b>USES</b>	<b>CATEGORIES</b>
Bedding, Drapery, Multipurpose	Prints
<b>BOOK</b>	<b>COLORS</b>
Denise McGaha	Blue, Light Blue, Burgundy
<b>DESIGN TYPES</b>	<b>SCALE</b>
Leaves, Contemporary / Modern	Large
<b>RAILROADED</b>	
Not Railroaded	



<b>WIDTH</b>	<b>VERTICAL REPEAT</b>	<b>HORIZONTAL REPEAT</b>	<b>CONTENT</b>
56.00 in (142.24 cm)	23.00 in (58.42 cm)	17.25 in (43.82 cm)	55% Linen, 45% Cotton
<b>BACKING</b>	<b>FIRE CODES</b>	<b>DOUBLE RUBS</b>	<b>PRODUCT NUMBER</b>
	UFAC Class I / NFPA 260	Exceeds 36,000 Double Rubs (Wyzenbeek Method)	1719406
<b>DATE BOOKED</b>	<b>COUNTRY</b>	<b>CLEANING CODES</b>	
01/2023	India	S	

**ADDITIONAL PRODUCT NOTES**  
Ca Tb 117-2013, Exclusive Pattern