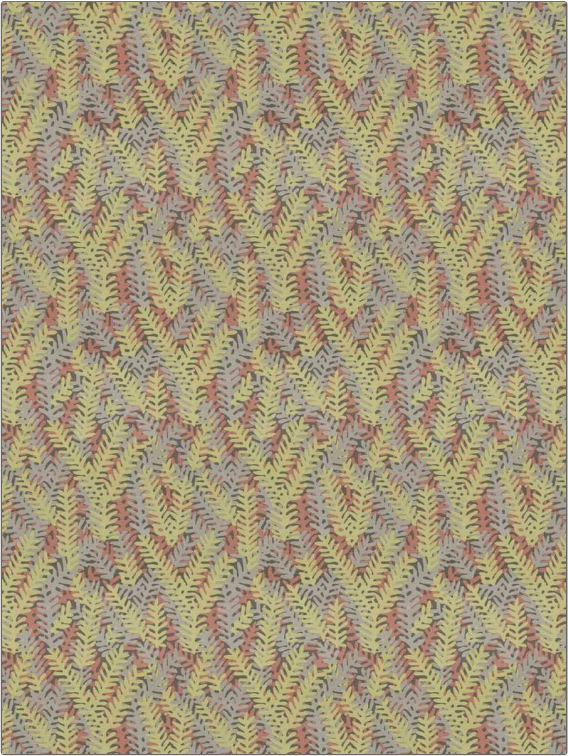


Fabric Product Details

|                                   |                          |
|-----------------------------------|--------------------------|
| PATTERN                           | Capistrano               |
| COLOR                             | Meadow                   |
| BRAND                             | APPLICATION              |
| Vervain                           | Fabric                   |
| USES                              | CATEGORIES               |
| Bedding, Drapery,<br>Multipurpose | Prints                   |
| BOOK                              | COLORS                   |
| Denise McGaha                     | Grey, Brown, Light Green |
| DESIGN TYPES                      | SCALE                    |
| Leaves, Contemporary /<br>Modern  | Large                    |
| RAILROADED                        |                          |
| Not Railroaded                    |                          |



|                      |                         |  |                       |
|----------------------|-------------------------|--|-----------------------|
| WIDTH                | VERTICAL REPEAT         | HORIZONTAL REPEAT                                | CONTENT               |
| 56.00 in (142.24 cm) | 23.00 in (58.42 cm)     | 17.25 in (43.82 cm)                              | 55% Linen, 45% Cotton |
| BACKING              | FIRE CODES              | DOUBLE RUBS                                      | PRODUCT NUMBER        |
|                      | UFAC Class I / NFPA 260 | Exceeds 36,000 Double<br>Rubs (Wyzenbeek Method) | 1719405               |
| DATE BOOKED          | COUNTRY                 | CLEANING CODES                                   |                       |
| 01/2023              | India                   | S  |                       |

|                                   |
|-----------------------------------|
| ADDITIONAL PRODUCT NOTES          |
| Ca Tb 117-2013, Exclusive Pattern |