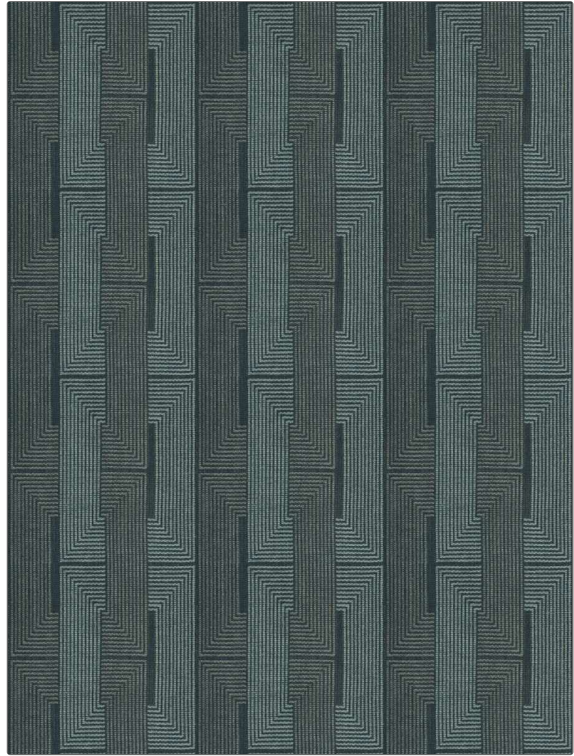


Fabric Product Details

PATTERN Till
COLOR Rain

| | |
|-------------------------------|--------------------|
| BRAND | APPLICATION |
| Vervain | Fabric |
| USES | CATEGORIES |
| Upholstery | Wovens, Chenille |
| BOOK | COLORS |
| Denise McGaha | Blue |
| DESIGN TYPES | SCALE |
| Geometric, Lattice / Fretwork | Medium |
| RAILROADED | |
| Not Railroaded | |



| | | | |
|----------------------|-------------------------|---|--|
| WIDTH | VERTICAL REPEAT | HORIZONTAL REPEAT | CONTENT |
| 55.00 in (139.70 cm) | 9.25 in (23.50 cm) | 8.00 in (20.32 cm) | 63% Viscose, 16% Cotton, 12% Linen, 9% Polyester |
| BACKING | FIRE CODES | DOUBLE RUBS | PRODUCT NUMBER |
| | UFAC Class I / NFPA 260 | Exceeds 45,000 Double Rubs (Wyzenbeek Method) | 1493003 |
| DATE BOOKED | COUNTRY | CLEANING CODES | |
| 01/2023 | Italy | S | |

ADDITIONAL PRODUCT NOTES

Exclusive Pattern