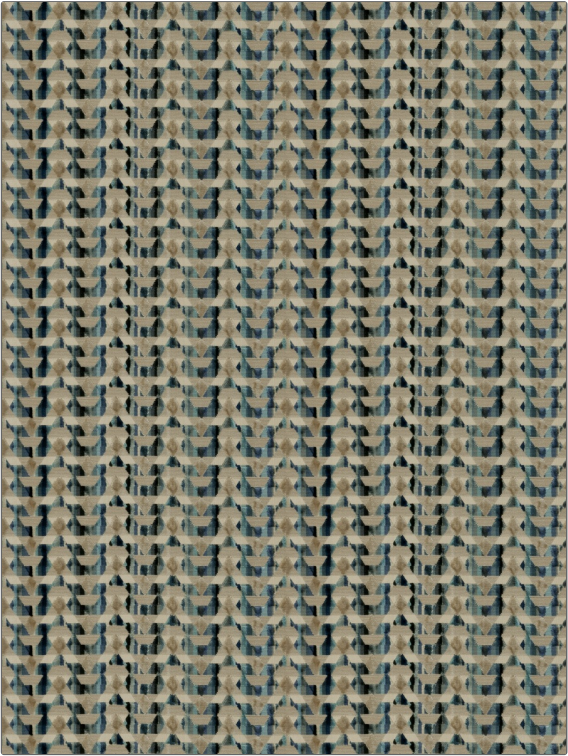


# Fabric Product Details

**PATTERN** Hasina  
**COLOR** Midnight

<b>BRAND</b>	<b>APPLICATION</b>
S. Harris	Fabric
<b>USES</b>	<b>CATEGORIES</b>
Upholstery	Velvet / Grospoint, Wovens
<b>BOOK</b>	<b>COLORS</b>
Geotrybal	Blue, Aqua / Teal
<b>DESIGN TYPES</b>	<b>SCALE</b>
Contemporary / Modern	Medium
<b>RAILROADED</b>	
Not Railroaded	



<b>WIDTH</b>	<b>VERTICAL REPEAT</b>	<b>HORIZONTAL REPEAT</b>	<b>CONTENT</b>
52.00 in (132.08 cm)	1.80 in (4.57 cm)	13.60 in (34.54 cm)	92% Viscose, 8% Polyester
<b>BACKING</b>	<b>FIRE CODES</b>	<b>DOUBLE RUBS</b>	<b>PRODUCT NUMBER</b>
	UFAC Class I / NFPA 260	Exceeds 20,000 Double Rubs (Wyzenbeek Method)	8408603
<b>DATE BOOKED</b>	<b>COUNTRY</b>	<b>CLEANING CODES</b>	
01/2017	Belgium	S	

**ADDITIONAL PRODUCT NOTES**  
 Passes 25,000 Martindale Tst, Ca Tb 117-2013, Exclusive Pattern