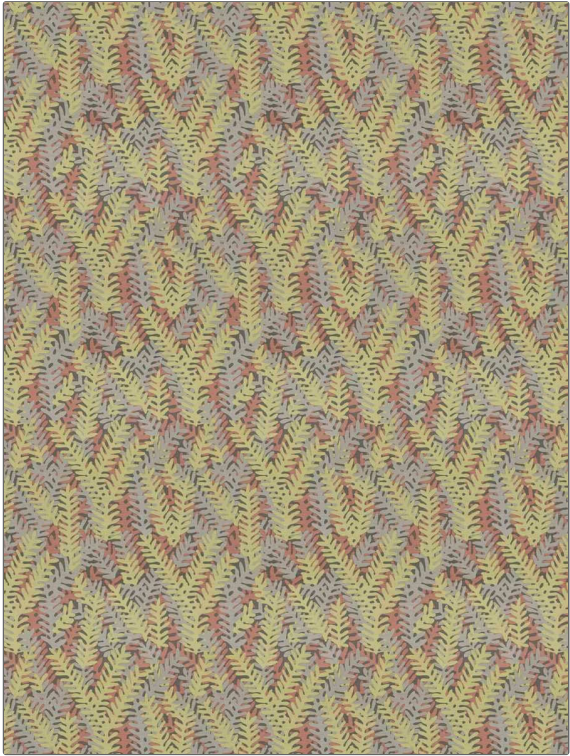


Fabric Product Details

PATTERN Capistrano
COLOR Meadow

| | |
|--------------------------------|--------------------------|
| BRAND | APPLICATION |
| Vervain | Fabric |
| USES | CATEGORIES |
| Bedding, Drapery, Multipurpose | Prints |
| BOOK | COLORS |
| Denise McGaha | Grey, Brown, Light Green |
| DESIGN TYPES | SCALE |
| Leaves, Contemporary / Modern | Large |
| RAILROADED | |
| Not Railroaded | |



| | | | |
|----------------------|-------------------------|---|-----------------------|
| WIDTH | VERTICAL REPEAT | HORIZONTAL REPEAT | CONTENT |
| 56.00 in (142.24 cm) | 23.00 in (58.42 cm) | 17.25 in (43.82 cm) | 55% Linen, 45% Cotton |
| BACKING | FIRE CODES | DOUBLE RUBS | PRODUCT NUMBER |
| | UFAC Class I / NFPA 260 | Exceeds 36,000 Double Rubs (Wyzenbeek Method) | 1719405 |
| DATE BOOKED | COUNTRY | CLEANING CODES | |
| 01/2023 | India | S | |

ADDITIONAL PRODUCT NOTES
Ca Tb 117-2013, Exclusive Pattern