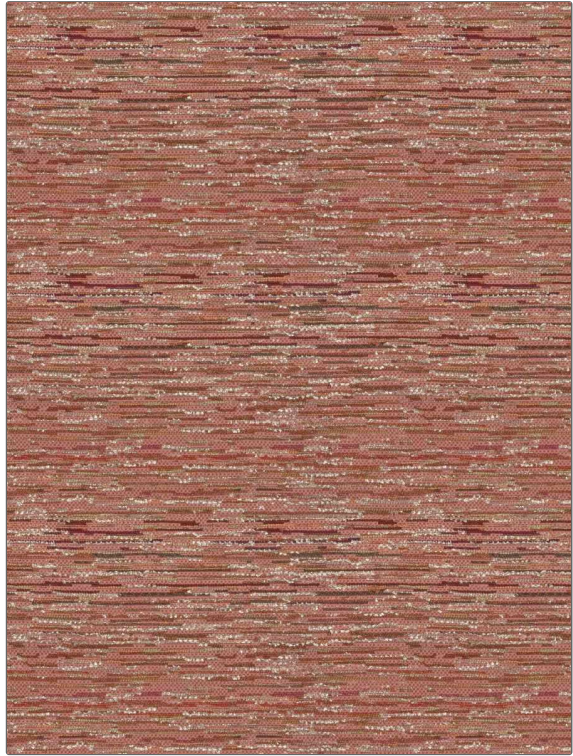


# Fabric Product Details

**PATTERN** Marais Boucle  
**COLOR** Camellia

<b>BRAND</b>	<b>APPLICATION</b>
S. Harris	Fabric
<b>USES</b>	<b>CATEGORIES</b>
Upholstery	Wovens, Chenille
<b>BOOK</b>	<b>COLORS</b>
Elements S24	Coral / Peach, Pink
<b>DESIGN TYPES</b>	<b>RAILROADED</b>
Solid, Stripes, Texture Plain, Contemporary / Modern	Not Railroaded



<b>WIDTH</b>	<b>VERTICAL REPEAT</b>	<b>HORIZONTAL REPEAT</b>	<b>CONTENT</b>
55.00 in (139.70 cm)	0.00 in (0.00 cm)	0.00 in (0.00 cm)	33% Cotton, 19% Viscose, 17% Nylon, 16% Acrylic, 8% Wool, 4% Linen, 3% Polyester
<b>BACKING</b>	<b>FIRE CODES</b>	<b>DOUBLE RUBS</b>	<b>PRODUCT NUMBER</b>
	Does Not Contain FR Chemicals, UFAC Class I / NFPA 260	Exceeds 51,000 Double Rubs (Wyzenbeek Method)	1802803
<b>DATE BOOKED</b>	<b>COUNTRY</b>	<b>CLEANING CODES</b>	
10/2023	Italy	S	

**ADDITIONAL PRODUCT NOTES**

Passes 30,000 Martindale Tst, Ca Tb 117-2013, Exclusive Pattern