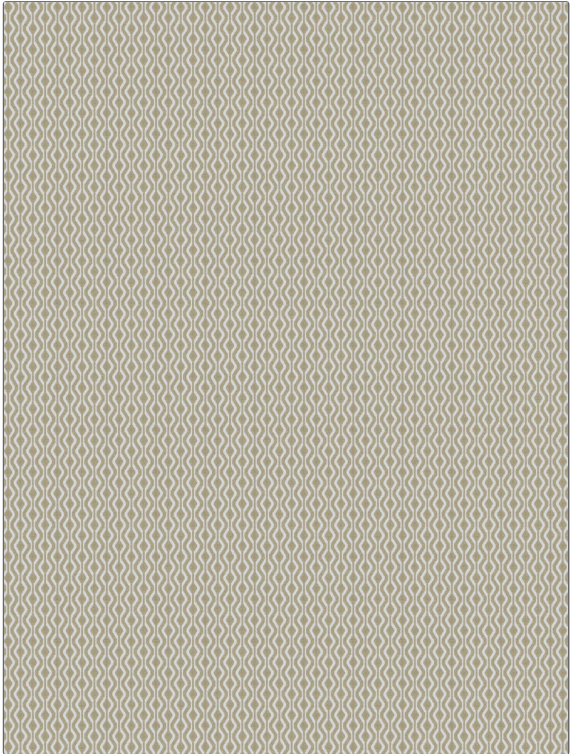


PATTERN	Shaker
COLOR	Birch

BRAND	APPLICATION
Fabricut	Fabric
USES	CATEGORIES
Upholstery	Crypton Home, Wovens, Solids / Small Scale Patterns
BOOK	COLORS
Color Studio Clean (3 Books) Birch	Taupe / Tan
DESIGN TYPES	SCALE
Geometric, Jacquard Pattern, Small Scale Woven, Contemporary / Modern, Diamond	Small
RAILROADED	
Not Railroaded	



WIDTH	FINISH	VERTICAL REPEAT	HORIZONTAL REPEAT
55.00 in (139.70 cm)	Crypton Home	1.00 in (2.54 cm)	1.18 in (3.00 cm)
CONTENT	BACKING	FIRE CODES	DOUBLE RUBS
80% Cotton, 20% Polyester	Acrylic / Latex Backing	UFAC Class I / NFPA 260	Exceeds 72,000 Double Rubs (Wyzenbeek Method)
PRODUCT NUMBER	DATE BOOKED	COUNTRY	CLEANING CODES
9660803	02/2019	USA	W

ADDITIONAL PRODUCT NOTES
Crypton Home, Pfas-Free, Ca Tb 117-2013, Acrylic / Latex Backing, Exclusive Pattern